



PERFECTTM
VIEW

VIDEO SURVEILLANCE

THE
PERFECT
WAY TO
STAY
SECURE

IP CAMERAS

CATALOG

TELECO[®]
COMBINING TECHNOLOGIES

HNCA12-FEA



HNC6D54-IZS



HNC61C-VBA



HNC61C-ODA



| | | | | |
|------------------------|--|--|---|--|
| Description | 12 Fisheye, Exterior | 20MP 4in1 5MP Motorized VF Vandal Dome, Exterior | 12 MP Motorized VF Bullet, Exterior | 12 MP Motorized VF Dome, Exterior |
| Image Sensor | 1/1.7" Progressive Scan CMOS | 1/2.7" Progressive Scan CMOS | 1/1.7" Progressive Scan CMOS | 1/1.7" Progressive Scan CMOS |
| Min. Illumination | 0.01 Lux @ (F1.2, AGC ON), 0 Lux with IR | 0.006 Lux @ (F1.2, AGC ON), 0 Lux with IR | 0.008 Lux @ (F1.2, AGC ON), 0 Lux with IR | 0.008 Lux @ (F1.2, AGC ON), 0 Lux with IR |
| Lens | 1.98mm @ F1.4 lens | (4) 2.8 -12mm @ F1.4 Motorized lens | 2.8 -12mm @ F1.2 Motorized lens | 2.8 -12mm @ F1.2 Motorized lens |
| IR Range | Up to 50ft | Up to 100ft | Up to 165ft | Up to 100ft |
| WDR | DWDR | 120 dB True WDR | DWDR | DWDR |
| Adjustment Range | N/A | 4 Lens: 180° to 180°, tilt: 0° to 135°, rotate: 0° to 355° | Universal Mount | Pan: 0° to 355°, tilt: 0° to 90°, rotate: 0° to 355° |
| Day & Night, DNR | ICR, 3D DNR | ICR, 3D DNR | ICR, 3D DNR | ICR, 3D DNR |
| Video Compression | H.264/ MJPEG/ H.264+ | H.265/ H.265+/ H.264 / H.264+ | H.265/ H.265+/ H.264 / H.264+ | H.265/ H.265+/ H.264 / H.264+ |
| Max. Image Resolution | 12MP CMOS, 4000 x 3072 | 20MP CMOS, (4) 2560x1920 | 12MP CMOS, 4000 x 3000 | 12MP CMOS, 4000 x 3000 |
| Frame Rate | 20fps (4000 x 3072), 25fps (3072 x 3072) | 25ps (2560x1920) | 20ps (4000 x 3000), 30fps (4096 x 2160) | 20ps (4000 x 3000), 30fps (4096 x 2160) |
| Weather Resistance | Yes | Yes | Yes | Yes |
| Client Software | CMS (Window), CMS (MAC) | CMS (Window), CMS (MAC) | CMS (Window), CMS (MAC) | CMS (Window), CMS (MAC) |
| Mobile Viewer | iPad/ iPhone/ Android | iPad/ iPhone/ Android | iPad/ iPhone/ Android | iPad/ iPhone/ Android |
| Dual Stream | Yes | Yes | Yes | Yes |
| Motion Detection | Yes | Yes | Yes | Yes |
| Audio Input/ Output | 1 / 1, Built-in Mic | 1 / 1 | N/A | 1 / 1 |
| Alarm Input/ Output | 1 / 1 | 2 / 2 | 2 / 2 | 1 / 1 |
| On Board Storage | Micro SD slot, up to 128 GB | Micro SD slot, up to 128 GB | Micro SD slot, up to 256 GB | Micro SD slot, up to 256 GB |
| Ratings | IP67, IK10 | IP67, IK10 | IP67, IK10 | IP67, IK10 |
| Power/ PoE | DC12V ± 10%, 14.7W/ PoE (802.3af) | 24V AC, DC12V ± 20%, 17W/ PoE (802.3af) | DC12V ± 10%, 13W/ PoE (802.3af) | DC12V ± 10%, 17W/ PoE (802.3af) |
| Heater & Blower | N/A | N/A | N/A | Heater |
| Certificate | UL | UL | UL | UL |
| Dimensions | 6.46" × 6.02" × 1.92" | Φ11.42" × 5.73" | Φ5.7" × 13.7" | Φ6.4" × 5.5" |
| Operating Temperature | -30°C ~ 60°C (-22°F ~ 140°F) | -30°C ~ 60°C (-22°F ~ 140°F) | -30°C ~ 65°C (-22°F ~ 149°F) | -40°C ~ 65°C (-40°F ~ 149°F) |
| Electrical Box, Recess | E: 280ZJ-DM25 | N/A | E: Included | E: Included |
| Wall, Pendant | W: 273ZJ-DM25, P: 271ZJ-DM25 | W: 602ZJ, P: 661ZJ | N/A | W: 473ZJ-155, P: 471ZJ-155 |
| Pole, Corner | P: 275ZJ, C: 276ZJ | P: 275ZJ, C: 276ZJ | P: 275ZJ, C: 276ZJ | P: 275ZJ, C: 276ZJ |

4 MP IP Cameras

HNC324-VBZ



HNC324-VDZ



HNC324-TD
HNC324-TDA*Audio



HNC324-TDB*Grey

HNC324-CU



| | | | | |
|------------------------|--|--|--|--|
| Description | 4MP Motorized VF Bullet, Exterior | 4MP Motorized VF Dome, Exterior | 4MP Fixed Mini Dome, Exterior | 4MP Fixed Cube, Interior |
| Image Sensor | 1/3" Progressive Scan CMOS | 1/3" Progressive Scan CMOS | 1/3" Progressive Scan CMOS | 1/3" Progressive Scan CMOS |
| Min. Illumination | 0.01 Lux @ (F1.2, AGC ON), 0 Lux with IR | 0.01 Lux @ (F1.2, AGC ON), 0 Lux with IR | 0.01 Lux @ (F1.2, AGC ON), 0 Lux with IR | 0.01 Lux @ (F1.2, AGC ON), 0 Lux with IR |
| Lens | 2.8 -12mm Motorized @ F1.6 | 2.8 -12mm Motorized @ F1.6 | 2.8mm, 4mm @ F1.6 | 2.8mm @ F1.6 |
| IR Range | Up to 150ft | Up to 100ft | Up to 100ft | Up to 30ft |
| WDR | 120 dB True WDR | 120 dB True WDR | 120 dB True WDR | 120 dB True WDR |
| Adjustment Range | Universal Mount | P: 0° - 355°, T: 0° - 75°, R: 0° ~ 355° | P: 0° - 355°, T: 0° - 75°, R: 0° ~ 355° | Universal |
| Day & Night, DNR | ICR, 3D DNR | ICR, 3D DNR | ICR, 3D DNR | ICR, 3D DNR |
| Video Compression | H.264/H.264+/H.265/H.265+ | H.264/H.264+/H.265/H.265+ | H.264/H.264+/H.265/H.265+ | H.264/H.264+/H.265/H.265+ |
| Max. Image Resolution | 4MP CMOS, 2688×1520 | 4MP CMOS, 2688×1520 | 4MP CMOS, 2688×1520 | 4MP CMOS, 2688×1520 |
| Frame Rate | 30fps (2688×1520), 30fps (1920×1080) | 30fps (2688×1520), 30fps (1920×1080) | 30fps (2688×1520), 30fps (1920×1080) | 30fps (2688×1520), 30fps (1920×1080) |
| Weather Resistance | Yes | Yes | Yes | No |
| Client Software | CMS (Window), CMS (MAC) | CMS (Window), CMS (MAC) | CMS (Window), CMS (MAC) | CMS (Window), CMS (MAC) |
| Mobile Viewer | iPad/ iPhone/ Android | iPad/ iPhone/ Android | iPad/ iPhone/ Android | iPad/ iPhone/ Android |
| Dual Stream | Yes | Yes | Yes | Yes |
| Motion Detection | Yes | Yes | Yes | Yes |
| Audio Input/ Output | 1 / 1 | 1 / 1 | HNC324-TDA 1/1 | 1 / 1, Built-in Mic & Speaker |
| Alarm Input/ Output | 1 / 1 | 1 / 1 | HNC324-TDA 1/1 | 1 / 1 |
| On Board Storage | Micro SD slot, up to 128 GB | Micro SD slot, up to 128 GB | Micro SD slot, up to 128 GB | Micro SD slot, up to 128 GB |
| Ratings | IP67, IK10 | IP67, IK10 | IP67, IK10 | N/A |
| Power/ PoE | DC12V ± 25%, 18W/ PoE (802.3af) | DC12V ± 25%, 12W/ PoE (802.3af) | DC12V ± 25%, 7.5W/ PoE (802.3af) | DC12V ± 25%, 7W/ PoE (802.3af) |
| Heater & Blower | N/A | N/A | N/A | N/A |
| Certificate | UL | UL | UL | UL |
| Dimensions | Φ5.67" × 13.1" | Φ6.0" × 5.2" | Φ4.4" × 3.2" | 2.85" × 3.62" × 5.17" |
| Operating Temperature | -30°C ~ 60°C (-22°F ~ 140°F) | -30°C ~ 60°C (-22°F ~ 140°F) | -30°C ~ 60°C (-22°F ~ 140°F) | -10°C ~ 40°C (14°F ~ 104°F) |
| Electrical Box, Recess | E: Included | E: Included, R: 227ZJ-DM37 | E: 280ZJ-DM18 | N/A |
| Wall, Pendant | N/A | W: 473ZJ-155, P: 471ZJ-155 | W: 258ZJ, 272ZJ-110B, P: 271ZJ-110 | N/A |
| Pole, Corner | P: 475ZJ, C: 476ZJ | P: 475ZJ, C: 476ZJ | P: 275ZJ, C: 276ZJ | N/A |

HNCA06-FEA



HNC326-CU



HNC326-XDZ



HNC326-TD
HNC326-TDA*Audio



HNC326-MB



| | | | | |
|--|--|--|--|---|
| 6MP Fisheye, Exterior | 6MP FixedCube, Interior | 6MP Motorized VF Turret, Exterior | 6MP Fixed Mini Dome, Exterior | 6MP Fixed Mini Bullet, Exterior |
| 1/1.8" Progressive Scan CMOS | 1/2.9" Progressive Scan CMOS | 1/2.9" Progressive Scan CMOS | 1/2.9" Progressive Scan CMOS | 1/2.9" Progressive Scan CMOS |
| 0.05 lux @ (F1.2, AGC ON), 0 lux with IR | 0.01 Lux @ (F1.2, AGC ON), 0 Lux with IR | 0.01 Lux @ (F1.2, AGC ON), 0 Lux with IR | 0.01 Lux @ (F1.2, AGC ON), 0 Lux with IR | 0.01 Lux @ (F1.2 AGC ON), 0 Lux with IR |
| 1.27mm @ F2.8 | 2.8mm @ F2.0 | 2.8 - 12mm @ F1.4 Motorized lens | 2.8mm, 4mm @ F2.0 | 2.8mm @ F2.0 |
| Up to 50ft | Up to 30ft | Up to 90ft | Up to 100ft | Up to 100ft |
| DWDR | 120 dB True WDR | 120 dB True WDR | 120 dB True WDR | 120 dB True WDR |
| N/A | Universal | Pan: 0° ~ 355°, Tilt 0° ~ 75°, Rotation 0 ~ 355° | P: 0° ~ 355°, T: 0° ~ 75°, R: 0° ~ 355° | Universal Mount |
| ICR, 3D DNR | ICR, 3D DNR | ICR, 3D DNR | ICR, 3D DNR | ICR, 3D DNR |
| H.264/H.264+ / MJPEG | H.264/H.264+/H.265/H.265+ | H.264/H.264+/H.265/H.265+ | H.264/H.264+/H.265/H.265+ | H.264/H.264+/H.265/H.265+ |
| 6MP CMOS, 3072 x 2048 | 6MP CMOS, 3072 x 2048 | 6MP CMOS, 3072 x 2048 | 6MP CMOS, 3072 x 2048 | 6MP CMOS, 3072 x 2048 |
| 3072 x 2048 @ 25fps | 20fps (3072 x 2048) | 20fps (3072 x 2048) | 20fps (3072 x 2048), 30fps (2560x1440) | 20fps (3072 x 2048), 30fps (2560x1440) |
| Yes | No | No | Yes | Yes |
| CMS (Window), CMS (MAC) | CMS (Window), CMS (MAC) | CMS (Window), CMS (MAC) | CMS (Window), CMS (MAC) | CMS (Window), CMS (MAC) |
| iPad/ iPhone/ Android | iPad/ iPhone/ Android | iPad/ iPhone/ Android | iPad/ iPhone/ Android | iPad/ iPhone/ Android |
| Yes | Yes | Yes | Yes | Yes |
| Yes | Yes | Yes | Yes | Yes |
| 1/1 | 1 / 1, Built-in Mic & Speaker | 1 / 1 | HNC326-TDA 1/1 | N/A |
| 1/1 | 1 / 1 | 1 / 1 | HNC326-TDA 1/1 | N/A |
| Micro SD slot, up to 128 GB | Micro SD slot, up to 128 GB | Micro SD slot, up to 128 GB | Micro SD slot, up to 128 GB | Micro SD slot, up to 128 GB |
| IP66, IK10 | N/A | IP67, IK10 | IP67, IK10 | IP67 |
| DC12V ± 10%, 11W/ PoE (802.3af) | DC12V ± 25%, 7W/ PoE (802.3af) | DC12V ± 25%, 12.5W/ PoE (802.3af) | DC12V ± 25%, 9W/ PoE (802.3af) | DC12V ± 25%, 7.5W/ PoE (802.3af) |
| N/A | N/A | N/A | N/A | N/A |
| UL | UL | UL | UL | UL |
| Φ6.46" × 1.72" | 4.05" × 2.57" × 1.28" | Φ5.4" × 5.7" | Φ4.4" × 3.2" | Φ2.8" × 6.1" |
| -30°C ~ 60°C (-22°F ~ 140°F) | -10°C ~ 40°C (14°F ~ 104°F) | -30°C ~ 60°C (-22°F ~ 140°F) | -30°C ~ 60°C (-22°F ~ 140°F) | -30°C ~ 60°C (-22°F ~ 140°F) |
| E: 280ZJ-DM25, 281ZJ-DM25 | N/A | E: 281ZJ-DM23 | E: 280ZJ-DM18 | E: 280ZJ-XS |
| W: 273ZJ-DM25, P: 271ZJ-DM25 | N/A | W: 473ZJ-135 | W: 258ZJ, 272ZJ-110B, P: 271ZJ-110 | N/A |
| P: 275ZJ, C: 276ZJ | N/A | P: 475ZJ, C: 476ZJ | P: 75ZJ, C: 276ZJ | P: 275ZJ, C: 276ZJ |

4 MP IP Cameras

HNC324-MB



HNC324-XD
HNC324-XDB*Grey



HNC324-XB



HNC324-WDA



HNC324-XDZ



| | | | | |
|--|--|--|--|--|
| 4MP Fixed Mini Bullet, Exterior | 4MP Fixed EXIR Turret, Exterior | 4MP Fixed EXIR Bullet, Exterior | 4MP Fixed Mini Dome, Exterior | 4MP Motorized VF Turret, Exterior |
| 1/3" Progressive Scan CMOS | 1/3" Progressive Scan CMOS | 1/3" Progressive Scan CMOS | 1/3" Progressive Scan CMOS | 1/3" Progressive Scan CMOS |
| 0.01 Lux @ (F1.2, AGC ON), 0 Lux with IR | 0.01 Lux @ (F1.2, AGC ON), 0 Lux with IR | 0.01 Lux @ (F1.2, AGC ON), 0 Lux with IR | 0.01 Lux @ (F1.2, AGC ON), 0 Lux with IR | 0.01 Lux @ (F1.2, AGC ON), 0 Lux with IR |
| 4mm @ F1.6 | 2.8mm, 4mm @ F1.6 | 4mm, 6mm @ F1.6 | 2.8mm, 4mm @ F1.6 | 2.8mm ~ 12mm @ F1.6 Motorized Lens |
| Up to 100ft | Up to 100ft | Up to 150ft | Up to 30ft | Up to 100ft |
| 120 dB True WDR | 120 dB True WDR | 120 dB True WDR | 120 dB True WDR | 120 dB True WDR |
| Universal Mount | P: 0° ~ 360°, T: 0° ~ 75°, R: 0 ~ 360° | Universal Mount | P: -30° ~ 30°, T: 0° ~ 75°, R: 0 ~ 360° | P: 0° ~ 355°, T: 0° ~ 75°, R: 0 ~ 360° |
| ICR, 3D DNR | ICR, 3D DNR | ICR, 3D DNR | ICR, 3D DNR | ICR, 3D DNR |
| H.264/H.264+/H.265/H.265+ | H.264/H.264+/H.265/H.265+ | H.264/H.264+/H.265/H.265+ | H.264/H.264+/H.265/H.265+ | H.264/H.264+/H.265/H.265+ |
| 4MP CMOS, 2688x1520 | 4MP CMOS, 2688x1520 | 4MP CMOS, 2688x1520 | 4MP CMOS, 2688x1520 | 4MP CMOS, 2688x1520 |
| 30fps (2688x1520), 30fps (1920x1080) | 30fps (2688x1520), 30fps (1920x1080) | 30fps (2688x1520), 30fps (1920x1080) | 30fps (2688x1520), 30fps (1920x1080) | 30fps (2688x1520), 30fps (1920x1080) |
| Yes | Yes | Yes | Yes | Yes |
| CMS (Window), CMS (MAC) | CMS (Window), CMS (MAC) | CMS (Window), CMS (MAC) | CMS (Window), CMS (MAC) | CMS (Window), CMS (MAC) |
| iPad/ iPhone/ Android | iPad/ iPhone/ Android | iPad/ iPhone/ Android | iPad/ iPhone/ Android | iPad/ iPhone/ Android |
| Yes | Yes | Yes | Yes | Yes |
| Yes | Yes | Yes | Yes | Yes |
| N/A | N/A | N/A | 1 / 1, Built-in Mic | 1/1 |
| N/A | N/A | N/A | 1 / 1 | 1/1 |
| Micro SD slot, up to 128 GB | Micro SD slot, up to 128 GB | Micro SD slot, up to 128 GB | Micro SD slot, up to 128 GB | Micro SD slot, up to 64 GB |
| IP67 | IP67 | IP67 | IP66, IK08 | IP67, IK10 |
| DC12V ± 25%, 6W/ PoE (802.3af) | DC12V ± 25%, 7.5W/ PoE (802.3af) | DC12V ± 25%, 9.5W/ PoE (802.3af) | DC12V ± 25%, 7.5W/ PoE (802.3af) | DC12V ± 25%, 12.5W/ PoE (802.3af) |
| N/A | N/A | N/A | N/A | N/A |
| UL | UL | UL | UL | UL |
| Φ2.8" × 6.1" | Φ5.01" × 3.78" | Φ4.1" × 11.8" | Φ4.3" × 2.22" | Φ5.4 × 5.7" |
| -30°C ~ 60°C (-22°F ~ 140°F) | -30°C ~ 60°C (-22°F ~ 140°F) | -30°C ~ 60°C (-22°F ~ 140°F) | -30°C ~ 60°C (-22°F ~ 140°F) | -30°C ~ 60°C (-22°F ~ 140°F) |
| E: 280ZJ-XS | E: 285ZJ-M, 285ZJ-M | E: 260ZJ | E: 280ZJ-M | E: 281ZJ-DM23 |
| N/A | W: 273ZJ-130B-TRL | N/A | W: 272ZJ-120B, P: 271ZJ-120 | N/A |
| P: 275ZJ, C: 276ZJ | P: 275ZJ, C: 276ZJ | P: 275ZJ, C: 276ZJ | P: 275ZJ, C: 276ZJ | P: 475ZJ, C: 476ZJ |

6 MP IP Cameras

HNC326-XD



HNC326-XB



HNC326-VBZ



HNC326-VDZ



| HNC326-XD | | HNC326-XB | | Description | | HNC326-VBZ | | HNC326-VDZ | |
|--|--|--|--|--|--|------------------------------|------------------------------|---------------------------------|---------------------------------|
| 6MP Fixed EXIR Turret, Exterior | 6MP Fixed EXIR Bullet, Exterior | 6MP Fixed EXIR Turret, Exterior | 6MP Fixed EXIR Bullet, Exterior | 6MP Motorized VF Bullet, Exterior | 6MP WDR Motorized VF Dome, Exterior | 1/2.9" Progressive Scan CMOS | 1/2.9" Progressive Scan CMOS | 1/2.9" Progressive Scan CMOS | 1/2.9" Progressive Scan CMOS |
| 0.01 Lux @ (F1.2, AGC ON), 0 Lux with IR | 0.01 Lux @ (F1.2, AGC ON), 0 Lux with IR | 0.01 Lux @ (F1.2, AGC ON), 0 Lux with IR | 0.01 Lux @ (F1.2, AGC ON), 0 Lux with IR | 0.01 Lux @ (F1.2, AGC ON), 0 Lux with IR | 0.01 Lux @ (F1.2, AGC ON), 0 Lux with IR | 2.8mm @ F2.0 | 2.8mm, 4mm @ F2.0 | 2.8 -12mm @ F1.4 Motorized Lens | 2.8 -12mm @ F1.4 Motorized Lens |
| Up to 100ft | Up to 150ft | Up to 100ft | Up to 150ft | Up to 150ft | Up to 100ft | 120 dB True WDR | 120 dB True WDR | 120 dB True WDR | 120 dB True WDR |
| P: 0° ~ 360°, T: 0° ~ 75°, R: 0° ~ 355° | Universal Mount | P: 0° ~ 360°, T: 0° ~ 75°, R: 0° ~ 355° | Universal Mount | Universal Mount | P: 0° - 355°, T: 0° - 75°, R: 0° ~ 355° | ICR, 3D DNR | ICR, 3D DNR | ICR, 3D DNR | ICR, 3D DNR |
| H.264/H.264+/H.265/H.265+ | H.264/H.264+/H.265/H.265+ | H.264/H.264+/H.265/H.265+ | H.264/H.264+/H.265/H.265+ | H.264/H.264+/H.265/H.265+ | H.264/H.264+/H.265/H.265+ | 6MP CMOS, 3072 x 2048 | 6MP CMOS, 3072 x 2048 | 6MP CMOS, 3072 x 2048 | 6MP CMOS, 3072 x 2048 |
| 20fps (3072 x 2048), 30fps (2560 x 1440) | 20fps (3072 x 2048), 30fps (2560 x 1440) | 20fps (3072 x 2048), 30fps (2560 x 1440) | 20fps (3072 x 2048), 30fps (2560 x 1440) | 20fps (3072 x 2048), 30fps (2560 x 1440) | 20fps (3072 x 2048), 30fps (2560 x 1440) | Yes | Yes | Yes | Yes |
| CMS (Window), CMS (MAC) | CMS (Window), CMS (MAC) | CMS (Window), CMS (MAC) | CMS (Window), CMS (MAC) | CMS (Window), CMS (MAC) | CMS (Window), CMS (MAC) | IPad/ iPhone/ Android | IPad/ iPhone/ Android | IPad/ iPhone/ Android | IPad/ iPhone/ Android |
| Yes | Yes | Yes | Yes | Yes | Yes | Yes | Yes | Yes | Yes |
| N/A | N/A | N/A | N/A | N/A | N/A | 1 / 1 | 1 / 1 | 1 / 1 | 1 / 1 |
| Micro SD slot, up to 128 GB | Micro SD slot, up to 128 GB | Micro SD slot, up to 128 GB | Micro SD slot, up to 128 GB | Micro SD slot, up to 128 GB | Micro SD slot, up to 128 GB | IP67, IK10 | IP67, IK10 | IP67, IK10 | IP67, IK10 |
| DC12V ± 25%, 7.5W/ PoE (802.3af) | DC12V ± 25%, 8.5W/ PoE (802.3af) | DC12V ± 25%, 7.5W/ PoE (802.3af) | DC12V ± 25%, 8.5W/ PoE (802.3af) | DC12V ± 25%, 17.5W/ PoE (802.3af) | DC12V ± 25%, 11.5W/ PoE (802.3af) | UL | UL | UL | UL |
| Φ5.0" × 3.8" | Φ4.1" × 11.8" | Φ5.0" × 3.8" | Φ4.1" × 11.8" | Φ5.7" × 13.1" | Φ6" × 5.2" | -30°C ~ 60°C (-22°F ~ 140°F) | -30°C ~ 60°C (-22°F ~ 140°F) | -30°C ~ 60°C (-22°F ~ 140°F) | -30°C ~ 60°C (-22°F ~ 140°F) |
| E: 280ZJ-M | E: 260ZJ | E: 280ZJ-M | E: 260ZJ | E: Included | E: Included, R: 227ZJ-DM37 | W: 273ZJ-130B-TRL | N/A | W: 473ZJ-155, P: 471ZJ-155 | W: 473ZJ-155, P: 471ZJ-155 |
| P: 275ZJ, C: 276ZJ | P: 275ZJ, C: 276ZJ | P: 275ZJ, C: 276ZJ | P: 275ZJ, C: 276ZJ | P: 475ZJ, C: 476ZJ | P: 475ZJ, C: 476ZJ | | | | |

8 MP 180° IP

8 MP IP Cameras

HNC6924F-A



HNC328-VBZ



HNC328-VDZ



HNC328-XDZ



| HNC6924F-A | | HNC328-VBZ | | HNC328-VDZ | | HNC328-XDZ | |
|---|-----------------------|--|--|--|--|--|--|
| 8MP Panoramic Dome, Exterior | Description | 8MP Motorized VF Bullet, Exterior | 8MP Motorized VF Bullet, Exterior | 8MP Motorized VF Dome, Exterior | 8MP Motorized VF Turret, Exterior | 1/1.8" Progressive Scan CMOS | 1/2.5" Progressive Scan CMOS |
| 0.002 Lux @ (F1.2, AGC ON), 0 Lux with IR | Image Sensor | 0.01 Lux @ (F1.2, AGC ON), 0 Lux with IR | 0.01 Lux @ (F1.2, AGC ON), 0 Lux with IR | 0.01 Lux @ (F1.2, AGC ON), 0 Lux with IR | 0.01 Lux @ (F1.2, AGC ON) | 4mm x 4 @ F1.8 | 2.8mm ~ 12mm @ F1.4 Motorized Lens |
| Up to 65ft | Min. Illumination | Up to 150ft | Up to 100ft | Up to 100ft | Up to 100ft | DWDR | 120 dB True WDR |
| Pan: 0° ~ 355°, Tilt: 0° ~ 90° | Lens | 120 dB True WDR | 120 dB True WDR | 120 dB True WDR | 120 dB True WDR | ICR, 3D DNR | ICR, 3D DNR |
| H.264/H.264+/H.265/H.265+ | IR Range | Universal Mount | P: 0° ~ 355°, T: 0° ~ 75°, R: 0° ~ 355° | P: 0° ~ 355°, T: 0° ~ 75°, R: 0° ~ 355° | P: 0° ~ 355°, T: 0° ~ 75°, R: 0° ~ 360° | H.264/H.264+/H.265/H.265+ | H.264/H.264+/H.265/H.265+ |
| 4096 x 1800 | WDR | ICR, 3D DNR | ICR, 3D DNR | ICR, 3D DNR | ICR, 3D DNR | 8MP (4K) CMOS, 3840 x 2160 | 8MP (4K) CMOS, 3840 x 2160 |
| 30fps (4096 x 1800), 30fps (1200x 1920) | Adjustment Range | H.264/H.264+/H.265/H.265+ | H.264/H.264+/H.265/H.265+ | H.264/H.264+/H.265/H.265+ | H.264/H.264+/H.265/H.265+ | 20fps (3840 x 2160), 30fps (3072 x 1728) | 20fps (3840 x 2160), 30fps (3072 x 1728) |
| Yes | Day & Night, DNR | 8MP (4K) CMOS, 3840 x 2160 | 8MP (4K) CMOS, 3840 x 2160 | 8MP (4K) CMOS, 3840 x 2160 | 8MP (4K) CMOS, 3840 x 2160 | Yes | Yes |
| CMS (Window), CMS (MAC) | Video Compression | 20fps (3840 x 2160), 30fps (3072 x 1728) | 20fps (3840 x 2160), 30fps (3072 x 1728) | 20fps (3840 x 2160), 30fps (3072 x 1728) | 20fps (3840 x 2160), 30fps (3072 x 1728) | CMS (Window), CMS (MAC) | CMS (Window), CMS (MAC) |
| IPad/ iPhone/ Android | Max. Image Resolution | Yes | Yes | Yes | Yes | IPad/ iPhone/ Android | IPad/ iPhone/ Android |
| Yes | Frame Rate | Yes | Yes | Yes | Yes | Yes | Yes |
| Yes | Weather Resistance | CMS (Window), CMS (MAC) | CMS (Window), CMS (MAC) | CMS (Window), CMS (MAC) | CMS (Window), CMS (MAC) | 1 / 1 | 1 / 1 |
| 2 / 2 | Client Software | IPad/ iPhone/ Android | IPad/ iPhone/ Android | IPad/ iPhone/ Android | IPad/ iPhone/ Android | 2 / 2 | 1 / 1 |
| Micro SD slot, up to 128 GB | Mobile Viewer | Yes | Yes | Yes | Yes | Micro SD slot, up to 128 GB | Micro SD slot, up to 128 GB |
| IP67, IK10 | Dual Stream | IP67, IK10 | IP67, IK10 | IP67, IK10 | IP67, IK10 | IP67, IK10 | IP67, IK10 |
| DC12V ± 20%, 28W/ PoE (802.3af) | Motion Detection | DC12V ± 25%, 19W/ PoE (802.3af) | DC12V ± 25%, 12.9W/ PoE (802.3af) | DC12V ± 25%, 12.9W/ PoE (802.3af) | DC12V ± 25%, 12.5W/ PoE (802.3af) | UL | UL |
| N/A | Audio Input/ Output | N/A | N/A | N/A | N/A | UL | UL |
| UL | Alarm Input/ Output | UL | UL | UL | UL | Φ5.67" × 13.1" | Φ5.35" × 5.73" |
| 7.5" × 8.2" × 8.2" | On Board Storage | Φ5.67" × 13.1" | Φ6.04" × 5.24" | Φ6.04" × 5.24" | Φ5.35" × 5.73" | -40°C ~ 60°C (-40°F ~ 140°F) | -30°C ~ 60°C (-22°F ~ 140°F) |
| -40°C ~ 60°C (-40°F ~ 140°F) | Ratings | -30°C ~ 60°C (-22°F ~ 140°F) | -30°C ~ 60°C (-22°F ~ 140°F) | -30°C ~ 60°C (-22°F ~ 140°F) | -30°C ~ 60°C (-22°F ~ 140°F) | N/A | N/A |
| N/A | Power/ PoE | E: Included | E: Included, R: 227ZJ-DM37 | E: Included, R: 227ZJ-DM37 | E: Included | W: 602ZJ | W: 473ZJ-135 |
| W: 602ZJ | Heater & Blower | N/A | N/A | N/A | N/A | P: 602ZJ-POLE, C: 602ZJ-CORNER | P: 475ZJ, C: 476ZJ |
| P: 602ZJ-POLE, C: 602ZJ-CORNER | Certificate | N/A | N/A | N/A | N/A | | |
| | Dimensions | P: 475ZJ, C: 476ZJ | P: 475ZJ, C: 476ZJ | P: 475ZJ, C: 476ZJ | P: 475ZJ, C: 476ZJ | | |

HNC326-WDA



HNC618-ODA



HNC618-VBA



HTD1217/V1-2



HTD2617/V1-3



| | | | | |
|--|---|---|--|--|
| 6MP Fixed Mini Dome, Exterior | 8MP Motorized VF Dome, Exterior | 8MP Motorized VF Bullet, Exterior | 2MP Thermal Turret, Exterior | 2MP Thermal Bullet, Exterior |
| 1/2.9" Progressive Scan CMOS | 1/1.8" Progressive Scan CMOS | 1/1.8" Progressive Scan CMOS | 1/2.7" CMOS / Vanadium Oxide | 1/2.7" CMOS / Vanadium Oxide |
| 0.01 Lux @ (F1.2, AGC ON), 0 Lux with IR | 0.007 Lux @ (F1.2, AGC ON), 0 Lux with IR | 0.007 Lux @ (F1.2, AGC ON), 0 Lux with IR | 0.002 Lux @ F1.2 / 8um to 14um | 0.002 Lux @ F1.2 / 8um to 14um |
| 2.8mm, 4mm @ F2.0 | 2.8 -12mm @ F1.2 Motorized Lens | 2.8 -12mm @ F1.2 Motorized Lens | 4mm @ F1.2 / 1.8mm @ 17 Pixel | 4mm @ F1.2 / 3.1mm @ 17 Pixel |
| Up to 30ft | Up to 100ft | Up to 165ft | Up to 50ft | Up to 130ft |
| 120 dB True WDR | 120 dB True WDR | 120 dB True WDR | 120 dB True WDR | DWDR |
| P: -30° ~ 30°, T: 0° ~ 75°, R: 0° ~ 360° | 0° to 355°, tilt: 0° to 75°, rotate: 0° to 360° | Universal Mount | P: 0° ~ 355°, T: 0° ~ 75°, R: 0° ~ 360° | Universal Mount |
| ICR, 3D DNR | ICR, 3D DNR | ICR, 3D DNR | ICR, 3D DNR | ICR, 3D DNR |
| H.264/H.264+/H.265/H.265+ | H.264/H.264+/H.265/H.265+ | H.264/H.264+/H.265/H.265+ | H.264/H.264+/H.265/H.265+ | H.264/H.264+/H.265/H.265+ |
| 6MP CMOS, 3072 x 2048 | 8MP (4K) CMOS, 3840 x 2160 | 8MP (4K) CMOS, 3840 x 2160 | 2MP / Thermal | 2MP / Thermal |
| 20fps (3072 x 2048), 30fps (2560 x 1440) | 30fps (3840 x 2160), 30fps (3200 x 1800) | 30fps (3840 x 2160), 30fps (3200 x 1800) | 30fps (1920 x 1080), Thermal (160 x 120) | 30fps (1920 x 1080), Thermal (160 x 120) |
| Yes | Yes | Yes | Yes | Yes |
| CMS (Window), CMS (MAC) | CMS (Window), CMS (MAC) | CMS (Window), CMS (MAC) | CMS (Window), CMS (MAC) | CMS (Window), CMS (MAC) |
| iPad/ iPhone/ Android | iPad/ iPhone/ Android | iPad/ iPhone/ Android | iPad/ iPhone/ Android | iPad/ iPhone/ Android |
| Yes | Yes | Yes | Yes | Yes |
| Yes | Yes | Yes | Yes | Yes |
| 1 / 1, built in mic | 1 / 1 | 1 / 1 | 1 / 1 | 1 / 1 |
| 1 / 1 | 1 / 1 | 2 / 2 | 1 / 1 | 2 / 2 |
| Micro SD slot, up to 128 GB | Micro SD slot, up to 256 GB | Micro SD slot, up to 256 GB | Micro SD slot, up to 128 GB | Micro SD slot, up to 128 GB |
| IP66, IK08 | IP67, IK10 | IP67, IK10 | IP67 | IP66 |
| DC12V ± 25%, 9.5W/ PoE (802.3af) | DC12V ± 25%, 17W/ PoE (802.3af) | DC12V ± 25%, 12W/ PoE (802.3af) | DC12V ± 25%, 7.5W/ PoE (802.3af) | DC12V ± 25%, 7.5W/ PoE (802.3af) |
| N/A | Heater | N/A | N/A | N/A |
| UL | UL | UL | UL | UL |
| Φ4.3" × 2.22" | Φ6.4" × 5.5" | Φ5.7" × 13.7" | 5.45" × 5.45" × 4.85" | 13.9" × 4.5" × 4.5" |
| -30°C ~ 60°C (-22°F ~ 140°F) | -40°C ~ 65°C (-40°F ~ 149°F) | -30°C ~ 65°C (-22°F ~ 149°F) | -30°C ~ 60°C (-22°F ~ 140°F) | -40°C ~ 60°C (-40°F ~ 140°F) |
| E: 280ZJ-M | E: Included | E: Included | N/A | E: Included |
| W: 272ZJ-120B, P: 271ZJ-120 | W: 473ZJ-155, P: 471-155 | N/A | W: 273ZJ-130B, P: 271ZJ-130 | N/A |
| P: 275ZJ, C: 276ZJ | P: 475ZJ, C: 476ZJ | P: 475ZJ, C: 476ZJ | P: 275ZJ, C: 276ZJ | P: 275ZJ, C: 276ZJ |

8 MP IP Cameras

HNC328-TD
HNC328-TDA*Audio

HNC328-MB



HNC328-XD



HNC328-XB



HNC6D24-IZS



| | | | | |
|--|--|--|--|--|
| 8MP Fixed Mini Dome, Exterior | 8MP Fixed Mini Bullet, Exterior | 8MP Fixed EXIR Turret, Exterior | 8MP Fixed EXIR Bullet, Exterior | 8MP 4in1 2MP Motorized VF Vandal Dome, Exterior |
| 1/2.5" Progressive Scan CMOS | 1/2.5" Progressive Scan CMOS | 1/2.5" Progressive Scan CMOS | 1/2.5" Progressive Scan CMOS | 1/2.7" Progressive Scan CMOS |
| 0.01 Lux @ (F1.2, AGC ON), 0 Lux with IR | 0.01 Lux @ (F1.2, AGC ON), 0 Lux with IR | 0.01 Lux @ (F1.2, AGC ON), 0 Lux with IR | 0.01 Lux @ (F1.2, AGC ON), 0 Lux with IR | 0.006 Lux @ (F1.2, AGC ON), 0 Lux with IR |
| 2.8mm @ F1.4 | 2.8mm @ F1.4 | 2.8mm @ F1.4 | 2.8mm @ F1.4 | (4) 2.8 -12mm @ F1.4 Motorized lens |
| Up to 100ft | Up to 100ft | Up to 100ft | Up to 150ft | Up to 100ft |
| 120 dB True WDR | 120 dB True WDR | 120 dB True WDR | 120 dB True WDR | True WDR |
| P: 0° ~ 355°, T: 0° ~ 75°, R: 0° ~ 355° | Universal Mount | P: 0° ~ 355°, T: 0° ~ 75°, R: 0° ~ 355° | Universal Mount | 4 Lens: 180° to 180°, tilt: 0° to 135°, rotate: 0° to 355° |
| ICR, 3D DNR | ICR, 3D DNR | ICR, 3D DNR | ICR, 3D DNR | ICR, 3D DNR |
| H.264/H.264+/H.265/H.265+ | H.264/H.264+/H.265/H.265+ | H.264/H.264+/H.265/H.265+ | H.264/H.264+/H.265/H.265+ | H.265/ H.265+/ H.264 / H.264+ |
| 8MP (4K) CMOS, 3840 x 2160 | 8MP (4K) CMOS, 3840 x 2160 | 8MP (4K) CMOS, 3840 x 2160 | 8MP (4K) CMOS, 3840 x 2160 | 8MP CMOS, (4) 1920x1080 |
| 20fps (3840 x 2160), 30fps (3072 x 1728) | 20fps (3840 x 2160), 30fps (3072 x 1728) | 20fps (3840 x 2160), 30fps (3072 x 1728) | 20fps (3840 x 2160), 30fps (3072 x 1728) | 30fps (1920x1080) |
| Yes | Yes | Yes | Yes | Yes |
| CMS (Window), CMS (MAC) | CMS (Window), CMS (MAC) | CMS (Window),CMS (MAC) | CMS (Window),CMS (MAC) | CMS (Window), CMS (MAC) |
| iPad/ iPhone/ Android | iPad/ iPhone/ Android | iPad/ iPhone/ Android | iPad/ iPhone/ Android | iPad/ iPhone/ Android |
| Yes | Yes | Yes | Yes | Yes |
| Yes | Yes | Yes | Yes | Yes |
| HNC328-TDA 1/1 | N/A | N/A | N/A | 1 / 1 |
| HNC328-TDA 1/1 | N/A | N/A | N/A | 2 / 2 |
| Micro SD slot, up to 128 GB | Micro SD slot, up to 128 GB | Micro SD slot, up to 128 GB | Micro SD slot, up to 128 GB | Micro SD slot, up to 128 GB |
| IP67, IK10 | IP67 | IP67 | IP67 | IP67, IK10 |
| DC12V ± 25%, 9W/ PoE (802.3af) | DC12V ± 25%, 7.5W/ PoE (802.3af) | DC12V ± 25%, 8.5W/ PoE (802.3af) | DC12V ± 25%, 9.5W/ PoE (802.3af) | 24V AC, DC12V ± 20%, 17W/ PoE (802.3af) |
| N/A | N/A | N/A | N/A | N/A |
| UL | UL | UL | UL | UL |
| Φ4.4" × 3.2" | Φ2.76" × 6.1" | Φ4.4" × 3.2" | Φ4.13" × 11.8" | Φ11.42" × 5.73" |
| -30°C ~ 60°C (-22°F ~ 140°F) | -30°C ~ 60°C (-22°F ~ 140°F) | -30°C ~ 60°C (-22°F ~ 140°F) | -30°C ~ 60°C (-22°F ~ 140°F) | -30°C ~ 60°C (-22°F ~ 140°F) |
| E: 280ZJ-DM18 | E: 280ZJ-XS | E: 280ZJ-M, 285ZJ-M | E: 260ZJ, 280ZJ-S | N/A |
| W: 258ZJ, 272ZJ-110B, P: 271ZJ-110 | N/A | W: 273ZJ-130B-TRL | N/A | W: 602ZJ, P: 661ZJ |
| P: 275ZJ, C: 276ZJ | P: 275ZJ, C: 276ZJ | P: 275ZJ, C: 276ZJ | P: 275ZJ, C: 276ZJ | P: 275ZJ, C: 276ZJ |

HNC344-XDLU



HNC344-XBL



HNC344-XDSL



HNC344-XBSL



| | | | | |
|------------------------|--|--|--|---|
| Description | 4MP ColorVu Fixed Turret, Exterior | 4MP ColorVu Fixed Bullet, Exterior | 4MP Strobe/Siren Fixed Turret, Exterior | 4MP Strobe/Siren Fixed Turret, Exterior |
| Image Sensor | 1/1.8" Progressive Scan CMOS | 1/1.8" Progressive Scan CMOS | 1/2.7" Progressive Scan CMOS | 1/2.7" Progressive Scan CMOS |
| Min. Illumination | 0.0014 Lux @ (F1.2, AGC ON), 0 Lux with IR | 0.0014 Lux @ (F1.2, AGC ON), 0 Lux with IR | 0.012 Lux @ (F1.2, AGC ON), 0 Lux with IR | 0.012 Lux @ (F1.2, AGC ON), 0 Lux with IR |
| Lens | 2.8mm @ F1.6 | 2.8mm @ F1.6 | 2.8mm @ F1.6 | 2.8mm @ F1.6 |
| IR Range | Up to 100ft | Up to 240ft | Up to 100ft | Up to 240ft |
| WDR | 120 dB True WDR | 120 dB True WDR | 120 dB True WDR | 120 dB True WDR |
| Adjustment Range | Pan: 0° to 360°, tilt: 0° to 75°, rotate: 0° to 360° | Universal | Pan: 0° to 360°, tilt: 0° to 75°, rotate: 0° to 360° | Universal |
| Day & Night, DNR | ICR, 3D DNR | ICR, 3D DNR | ICR, 3D DNR | ICR, 3D DNR |
| Video Compression | H.264/H.264+/H.265/H.265+ | H.264/H.264+/H.265/H.265+ | H.264/H.264+/H.265/H.265+ | H.264/H.264+/H.265/H.265+ |
| Max. Image Resolution | 4MP CMOS, 2688×1520 | 4MP CMOS, 2688×1520 | 4MP CMOS, 2688×1520 | 4MP CMOS, 2688×1520 |
| Frame Rate | 30fps (2688×1520), 30fps (1920×1080) | 30fps (2688×1520), 30fps (1920×1080) | 30fps (2688×1520), 30fps (1920×1080) | 30fps (2688×1520), 30fps (1920×1080) |
| Weather Resistance | Yes | Yes | Yes | Yes |
| Client Software | CMS (Window), CMS (MAC) | CMS (Window), CMS (MAC) | CMS (Window), CMS (MAC) | CMS (Window), CMS (MAC) |
| Mobile Viewer | iPad/ iPhone/ Android | iPad/ iPhone/ Android | iPad/ iPhone/ Android | iPad/ iPhone/ Android |
| Dual Stream | Yes | Yes | Yes | Yes |
| Motion Detection | Yes | Yes | Yes | Yes |
| Audio Input/ Output | N/A | N/A | N/A | N/A |
| Alarm Input/ Output | N/A | N/A | N/A | N/A |
| On Board Storage | Micro SD slot, up to 128 GB | Micro SD slot, up to 128 GB | Micro SD slot, up to 128 GB | Micro SD slot, up to 128 GB |
| Ratings | IP66 | IP67 | IP67 | IP67 |
| Power/ PoE | DC12V ± 25%, 7.5W/ PoE (802.3af) | DC12V ± 25%, 7.5W/ PoE (802.3af) | DC12V ± 25%, 7.5W/ PoE (802.3af) | DC12V ± 25%, 7.5W/ PoE (802.3af) |
| Certificate | UL | UL | UL | UL |
| Dimensions | Φ5.4" × 5" | Φ4.1" × 11.5" | Φ5.4" × 5" | Φ4.1" × 11.5" |
| Operating Temperature | -30°C ~ 60°C (-22°F ~ 140°F) | -30°C ~ 60°C (-22°F ~ 140°F) | -30°C ~ 60°C (-22°F ~ 140°F) | -30°C ~ 60°C (-22°F ~ 140°F) |
| Electrical box, Recess | E: 280ZJ-DM21 | E: 260ZJ, 280ZJ-S | E: 280ZJ-DM21 | E: 260ZJ, 280ZJ-S |
| Wall, Pendant | W: 273ZJ-140B, P: 273ZJ-140 | N/A | W: 273ZJ-140B, P: 273ZJ-140 | N/A |
| Pole, Corner | P: 275ZJ, C: 276ZJ | P: 275ZJ, C: 276ZJ | P: 275ZJ, C: 276ZJ | P: 275ZJ, C: 276ZJ |

2MP 20x Zoom / LPR IP Cameras

HNC512-VBA94



HNC512-VBA12-LPR
HNC512-VBA32-LPR*



| | | |
|------------------------|---|---|
| Description | 2 MP Long Range VF Bullet, Exterior | 2 MP Smart IP License Plate Camera |
| Image Sensor | 1/2.8" Progressive Scan CMOS | 1/2.8" Progressive Scan CMOS |
| Min. Illumination | 0.005 Lux @ (F1.2, AGC ON), 0 lux with IR | 0.005 Lux @ (F1.2, AGC ON), 0 lux with IR |
| Lens | 4.7-94mm @ F1.4 | 2.8-12mm @ F1.4, 8-32mm @ F1.4 |
| IR Range | 360ft. | 150ft, 300ft |
| WDR | 120dB | 140dB |
| Adjustment Range | Universal mount | Universal mount |
| Day & Night, DNR | ICR, 3D DNR | IRC with auto switch, 3D DNR |
| Video Compression | H.264+/H.264/ MJPEG/ MPEG4 | H.264+/H.264/ MJPEG/ MPEG4 |
| Max. Image Resolution | 1920 × 1080 | 1920 × 1080 |
| Frame Rate | 60fps (1920 × 1080) | 60fps (1920 × 1080) |
| Weather Resistance | Yes | Yes |
| Client Software | IVMS (Window), IVMS (MAC) | IVMS (Window), IVMS (MAC) |
| Mobile Viewer | iPad/ iPhone/ Android | iPad/ iPhone/ Android |
| Dual Stream | Yes | Yes |
| Motion Detection | Yes | Yes |
| Audio Input/ Output | 1 / 1 | 1 / 1 |
| Alarm Input/ Output | 1 / 1 | 1 / 1 |
| On Board Storage | Micro SD slot, up to 128 GB | Micro SD slot, up to 128 GB |
| Ratings | IP67 | IP67 |
| Power/ PoE | 12 V DC ± 10%, PoE (802.3af) Max 15W | 12 V DC ± 10%, PoE (802.3af) Max 15W |
| Certificate | UL | UL |
| Dimensions | 3.94" × 4.09" × 12.28" | 3.94" × 4.09" × 12.28" |
| Operating Temperature | -30 °C ~ 60 °C (-22 °F ~ 140 °F) | -30 °C ~ 60 °C (-22 °F ~ 140 °F) |
| Weight | 4.41lbs | 4.41lbs |
| Electrical box, Recess | Included | Included |
| Wall, Pendant | N/A | N/A |
| Pole, Corner | P: 275ZJ, C: HTH-276ZJ | P: 275ZJ, C: 276ZJ |

Mounting Brackets

| | |
|--|---------------|
| | 258ZJ |
| | 272ZJ-110B |
| | 272ZJ-110-TRS |
| | 273ZJ-135B |
| | 271ZJ-110 |
| | 271ZJ-120 |
| | 271ZJ-135 |
| | 271ZJ-DM25 |
| | 276ZJ |
| | 476ZJ |
| | 275ZJ |
| | 475ZJ |

HNC322-VBZ



HNC322-VDZ



HNC322-TD



HNC322-MB



| | | | | |
|------------------------|--|--|--|--|
| Description | 2MP Motorized VF Bullet, Exterior | 2MP Motorized VF Dome, Exterior | 2MP Fixed Mini Dome, Exterior | 2MP Fixed Mini Bullet, Exterior |
| Image Sensor | 1/2.8" Progressive Scan CMOS | 1/2.8" Progressive Scan CMOS | 1/2.8" Progressive Scan CMOS | 1/2.8" Progressive Scan CMOS |
| Min. Illumination | 0.01 Lux @ (F1.2, AGC ON), 0 Lux with IR | 0.01 Lux @ (F1.2, AGC ON), 0 Lux with IR | 0.01 Lux @ (F1.2, AGC ON), 0 Lux with IR | 0.01 Lux @ (F1.2, AGC ON), 0 Lux with IR |
| Lens | 2.7 -12mm @ F1.4 | 2.7 -12mm @ F1.4 | 2.8mm, 4mm @ F2.0 | 4mm @ F2.0 |
| IR Range | Up to 100ft | Up to 100ft | Up to 100ft | Up to 100ft |
| WDR | True 120dB WDR | True 120dB WDR | True 120dB WDR | True 120dB WDR |
| Adjustment Range | Universal Mount | Pan: 0° - 355°, Tilt: 0° - 75°, Rotation 0° ~ 355° | Pan: 0° - 355°, Tilt: 0° ~ 75°, Rotation 0° ~ 355° | Universal Mount |
| Day & Night, DNR | ICR, 3D DNR | ICR, 3D DNR | ICR, 3D DNR | ICR, 3D DNR |
| Video Compression | H.264/H.264+/H.265/H.265+ | H.264/H.264+/H.265/H.265+ | H.264/H.264+/H.265/H.265+ | H.264/H.264+/H.265/H.265+ |
| Max. Image Resolution | 2MP (1080p) CMOS, 1920 x 1080 | 2MP (1080p) CMOS, 1920 x 1080 | 2MP (1080p) CMOS, 1920 x 1080 | 2MP (1080p) CMOS, 1920 x 1080 |
| Frame Rate | 30fps (1920 x 1080) | 30fps (1920 x 1080) | 30fps (1920 x 1080) | 30fps (1920 x 1080) |
| Weather Resistance | Yes | Yes | Yes | Yes |
| Client Software | IVMS (Window), IVMS (MAC) | IVMS (Window), IVMS (MAC) | IVMS (Window), IVMS (MAC) | IVMS (Window), IVMS (MAC) |
| Mobile Viewer | iPad/ iPhone/ Android | iPad/ iPhone/ Android | iPad/ iPhone/ Android | iPad/ iPhone/ Android |
| Dual Stream | Yes | Yes | Yes | Yes |
| Motion Detection | Yes | Yes | Yes | Yes |
| Audio Input/ Output | 1 / 1 | 1 / 1 | N/A | N/A |
| Alarm Input/ Output | 1 / 1 | 1 / 1 | N/A | N/A |
| On Board Storage | Micro SD slot, up to 128 GB | Micro SD slot, up to 128 GB | Micro SD slot, up to 128 GB | Micro SD slot, up to 128 GB |
| Ratings | IP67 | IP67, IK10 | IP67, IK10 | IP67 |
| Power/ PoE | DC12V ± 10%, 11W/ PoE (802.3af) | DC12V ± 10%, 11W/ PoE (802.3af) | DC12V ± 10%, 7W/ PoE (802.3af) | DC12V ± 10%, 7W/ PoE (802.3af) |
| Certificate | UL | UL | UL | UL |
| Dimensions | Φ10.2" × 4.1" | Φ5.51" × 3.94" | Φ4.4" × 3.2" | Φ2.8" × 6.1" |
| Operating Temperature | -30°C ~ 60°C (-22°F ~ 140°F) | -30°C ~ 60°C (-22°F ~ 140°F) | -30°C ~ 60°C (-22°F ~ 140°F) | -30°C ~ 60°C (-22°F ~ 140°F) |
| Electrical box, Recess | E: Included | N/A | E: 280ZJ-DM18 | E: 280ZJ-XS |
| Wall, Pendant | N/A | W: 473ZJ-155B, P: 471ZJ-155 | W: 258ZJ, 272ZJ-110B, P: 271ZJ-110 | N/A |
| Pole, Corner | P: 275ZJ, C: HTH-276ZJ | P: 475ZJ, C: 476ZJ | P: 275ZJ, C: 276ZJ | P: 275ZJ, C: 276ZJ |



272ZJ-120B



273ZJ-DM26B



473ZJ-155



273ZJ-140B



273ZJ-DM25



273ZJ-130B-TRL



473ZJ-135



273ZJ-130B



271ZJ-DM25



249ZJ



227ZJ-DM37



471ZJ-135

Recess



227ZJ



471ZJ-155



260ZJ



280ZJ-DM18



285ZJ-M



280ZJ-DM25



280ZJ-M



280ZJ-XS



280ZJ-DM21



280ZJ-S

Rain Shade



250ZJ



253ZJ-M

2MP IP Cameras

2MP Pinhole IP Cameras

HNC322-XD/2.8



HNC322-CU



HNC312-RDW



HNA02-PHL



HNC312-PH



| | | | | |
|--|--|--------------------------------------|----------------------------------|-------------------------------|
| 2MP Fixed EXIR Turret, Exterior | 2MP Fixed Cube, Interior | 2MP Fixed Mini Recess Dome, Interior | 2MP Fixed Pinhole Camera | 2MP Fixed Pinhole Camera |
| 1/2.8" Progressive Scan CMOS | 1/2.8" Progressive Scan CMOS | 1/3" Progressive Scan CMOS | 1/2.7" Progressive Scan CMOS | 1/2.7" Progressive Scan CMOS |
| 0.01 Lux @ (F1.2, AGC ON), 0 Lux with IR | 0.01 Lux @ (F1.2, AGC ON), 0 Lux with IR | 0.01 Lux @ (F1.2, AGC ON) | 0.01 Lux @ (F1.2, AGC ON) | 0.025 Lux @ (F2.0, AGC ON) |
| 2.8mm @ F2.0 | 4mm @ F2.0 | 2.8mm, 4mm @ F1.4 | 3.7 mm @ F2.5 | 3.7mm @ F2.0 |
| Up to 100ft | Up to 30ft | N/A | N/A | N/A |
| True 120dB WDR | True 120dB WDR | DWDR | True 120dB WDR | True 120dB WDR |
| Pan: 0° to 360°, tilt: 0° to 75°, rotate: 0° to 360° | Universal | Recess mount | Pinhole | Pinhole |
| ICR, 3D DNR | ICR, 3D DNR | ICR, 3D DNR | ICR, 3D DNR | Electronic |
| H.264/H.264+/H.265/H.265+ | H.264/H.264+/H.265/H.265+ | H.264/H.264+/H.265/H.265+ | H.264/H.264+/H.265/H.265+ | H.264/H.264+/H.265/H.265+ |
| 2MP (1080p) CMOS, 1920 x 1080 | 2MP (1080p) CMOS, 1920 x 1080 | 2MP (1080p) CMOS, 1920 x 1080 | 2MP (1080p) CMOS, 1920 x 1080 | 2MP (1080p) CMOS, 1920 x 1080 |
| 30fps (1920 x 1080) | 30fps (1920 x 1080) | 30fps (1920 x 1080) | 30fps (1920 x 1080) | 30fps (1920 x 1080) |
| Yes | No | No | No | No |
| IVMS (Window), IVMS (MAC) | IVMS (Window), IVMS (MAC) | IVMS (Window), IVMS (MAC) | IVMS (Window), IVMS (MAC) | IVMS (Window), IVMS (MAC) |
| iPad/ iPhone/ Android | iPad/ iPhone/ Android | iPad/ iPhone/ Android | iPad/ iPhone/ Android | iPad/ iPhone/ Android |
| Yes | Yes | Yes | Yes | Yes |
| Yes | Yes | Yes | Yes | Yes |
| N/A | 1 / 1, Built-in Mic | N/A | 1 / 1 | 1 / 0 |
| N/A | 1 / 1 | N/A | 1 / 1 | N/A |
| N/A | Micro SD slot, up to 128 GB | N/A | N/A | N/A |
| IP67 | N/A | N/A | N/A | N/A |
| DC12V ± 10%, 5.5W/ PoE (802.3af) | DC12V ± 10%, 5W/ PoE (802.3af) | DC12V ± 10%, 4.2W/ PoE (802.3af) | DC12V ± 10%, 6.5W/ PoE (802.3af) | DC12V ± 10% < 3W |
| UL | UL | UL | UL | UL |
| Φ5.0" × 3.8" | 2.85" x 3.6" x 5.17" | Φ3.7" × 4.8" | 3.07" x 4.13" x 1.26" | 1.2" x 1.2" x 1" |
| -30°C ~ 60°C (-22°F ~ 140°F) | -30°C ~ 60°C (-22°F ~ 140°F) | -30°C ~ 60°C (-22°F ~ 140°F) | -30°C ~ 60°C (-22°F ~ 140°F) | -30°C ~ 60°C (-22°F ~ 140°F) |
| E: 280ZJ-M | N/A | N/A | N/A | N/A |
| W: 273ZJ-130B-TRL | N/A | N/A | N/A | N/A |
| P: 275ZJ, C: HTH-276ZJ | N/A | N/A | N/A | N/A |

4MP SmartSense IP Cameras

HNC344-TD



HNC344-XD



HNC344-XB



HNC344-VBZ



HNC344-VDZ



| | | | | | |
|---------------------|---|---|---|---|---|
| Description | 4 MP SmartSense Fixed Mini Dome Exterior | 4 MP SmartSense Fixed Turret, Exterior | 4 MP SmartSense Fixed Bullet, Exterior | 4 MP SmartSense Motorized VF Bullet, Exterior | 4 MP SmartSense Motorized VF Dome, Exterior |
| Image Sensor | 1/2.7" Progressive Scan CMOS | 1/2.7" Progressive Scan CMOS | 1/2.7" Progressive Scan CMOS | 1/2.7" Progressive Scan CMOS | 1/2.7" Progressive Scan CMOS |
| Min. Illumination | 0.007 Lux @ (F1.2, AGC ON), 0 lux with IR | 0.007 Lux @ (F1.2, AGC ON), 0 lux with IR | 0.007 Lux @ (F1.2, AGC ON), 0 lux with IR | 0.007 Lux @ (F1.2, AGC ON), 0 lux with IR | 0.007 Lux @ (F1.2, AGC ON), 0 lux with IR |
| Lens | 2.8mm @ F1.4 | 2.8mm @ F1.4 | 2.8mm @ F1.4 | 2.8mm - 12mm @ F1.4 | 2.8mm - 12mm @ F1.4 |
| IR Range | 100ft. | 100ft. | 160ft. | 160ft. | 100ft. |
| WDR | 120dB True WDR | 120dB True WDR | 120dB True WDR | 120dB True WDR | 120dB True WDR |
| Adjustment Range | P: 0° to 355°, T:0° to 75°, R: 0° to 355° | P: 0° to 355°, T:0° to 75°, R: 0° to 355° | Universal mount | Universal mount | P: 0° to 355°, T:0° to 75°, R: 0° to 355° |
| Day & Night, DNR | ICR, 3D DNR | ICR, 3D DNR | ICR, 3D DNR | ICR, 3D DNR | ICR, 3D DNR |
| Video Compression | H.265/H.264 | H.265/H.264 | H.265/H.264 | H.265/H.264 | H.265/H.264 |
| Max. Image Res | 2688 × 1520 | 2688 × 1520 | 2688 × 1520 | 2688 × 1520 | 2688 × 1520 |
| Frame Rate | 30fps (2688 × 1520), 30fps (1920 x 1080) | 30fps (2688 × 1520), 30fps (1920 x 1080) | 30fps (2688 × 1520), 30fps (1920 x 1080) | 30fps (2688 × 1520), 30fps (1920 x 1080) | 30fps (2688 × 1520), 30fps (1920 x 1080) |
| Weather Resistance | Yes | Yes | Yes | Yes | Yes |
| Client Software | IVMS (Window), IVMS (MAC) | IVMS (Window), IVMS (MAC) | IVMS (Window), IVMS (MAC) | IVMS (Window), IVMS (MAC) | IVMS (Window), IVMS (MAC) |
| Mobile Viewer | iPad/ iPhone/ Android | iPad/ iPhone/ Android | iPad/ iPhone/ Android | iPad/ iPhone/ Android | iPad/ iPhone/ Android |
| Dual Stream | Yes | Yes | Yes | Yes | Yes |
| Motion Detection | When SmartSense Disabled | When SmartSense Disabled | When SmartSense Disabled | When SmartSense Disabled | When SmartSense Disabled |
| Audio Input/ Output | N/A | N/A | N/A | 1 / 1 | 1 / 1 |
| Alarm Input/ Output | N/A | N/A | N/A | 1 / 1 | 1 / 1 |
| On Board Storage | Micro SD slot, up to 128 GB | Micro SD slot, up to 128 GB | Micro SD slot, up to 128 GB | Micro SD slot, up to 128 GB | Micro SD slot, up to 128 GB |
| Ratings | IP67, IK10 | IP67 | IP67 | IP67, IK10 | IP67, IK10 |
| Power/ PoE | 12 V DC ± 25%, PoE (802.3at) Max 15W | 12 V DC ± 25%, PoE (802.3at) Max 15W | 12 V DC ± 25%, PoE (802.3at) Max 15W | 12 V DC ± 25%, PoE (802.3at) Max 15.5W | 12 V DC ± 25%, PoE (802.3at) Max 11W |
| Certificate | UL | UL | UL | UL | UL |
| Dimensions | Φ4.8" × 3.6" | Φ5.4" × 5" | Φ4.1" × 11.4" | Φ4.1" × 11.7" | Φ6" × 4.4" |
| Operating Temp. | -30 °C ~ 50 °C (-22 °F ~ 122 °F) | -30 °C ~ 60 °C (-22 °F ~ 140 °F) | -30 °C ~ 50 °C (-22 °F ~ 122 °F) | -30 °C ~ 60 °C (-22 °F ~ 140 °F) | -30 °C ~ 60 °C (-22 °F ~ 140 °F) |
| Weight | 1.3 lbs | 0.9 lbs | 2.4 lbs | 3.1 lbs | 2 lbs |
| Elect. box, Rec. | N/A | E: 280ZJ-DM21 | E: 260ZJ | E: 260ZJ | N/A |
| Wall, Pendant | W: 272ZJ-120B, P: 271ZJ-120 | W: 273ZJ-140, P: 271ZJ-140 | N/A | N/A | W: 473ZJ-155, P: 471ZJ-155 |
| Pole, Corner | P: 275ZJ, C: HTH-276ZJ | P: 275ZJ, C: HTH-276ZJ | P: 275ZJ, C: HTH-276ZJ | P: 275ZJ, C: HTH-276ZJ | P: 475ZJ, C: HTH-476ZJ |



Perfect View is a complete video surveillance solution. With commercial-grade IP, TVI and Analog equipment, we provide flexibility for all applications. Access cameras from anywhere; even manage multiple systems with a free state-of-the-art CMS (Centralized Management Software).

NO LICENSE FEES

RESOLUTION

- IP up to 20MP
- TVI up to 8MP
- Analog Supported

QUALITY SUPPORT AND PRODUCTS

- 3 Year Warranty
- ONVIF 2.5 Compliant IP Cameras
- Advanced Replacement
- In-House Technical Support
- One Stop Shop with Wireless and Switches

MONITOR UP TO 256 RECORDERS OR OVER 1000 CAMERAS PER PC

- View up to 64 Cameras at Once
- View up to 4 Monitors per PC

BENEFITS

- Safety
- Theft Deterrent
- Quality Control
- Fraud Protection
- Insurance Premiums



MOBILE APP FOR SMARTPHONES AND TABLETS



PC/MAC COMPATIBILITY



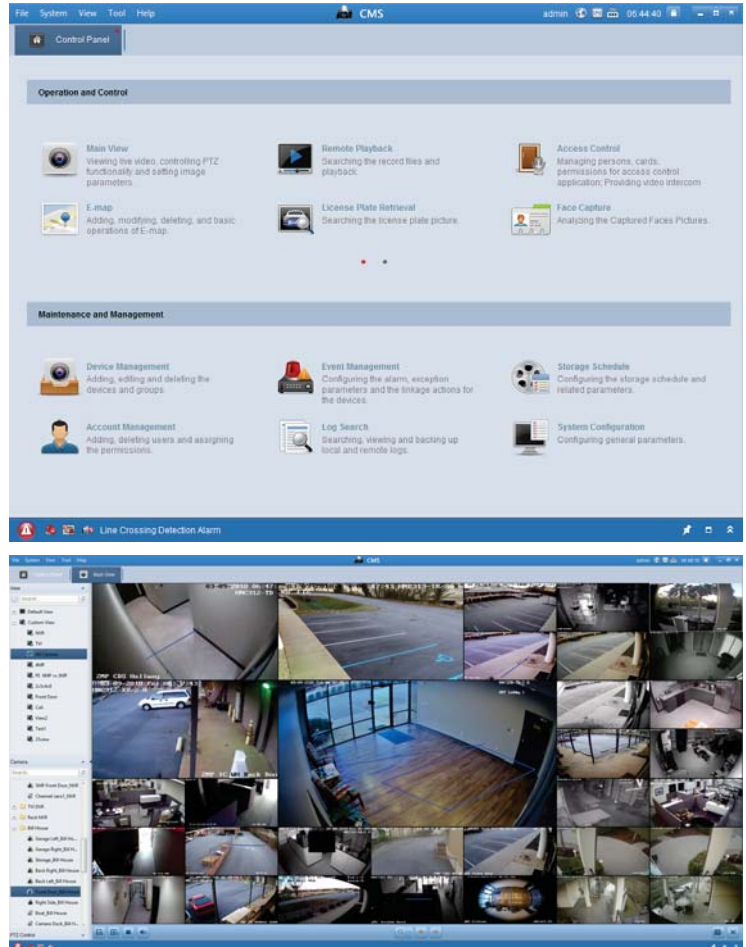
SALES: PerfectViewSales@teleco.com | **SUPPORT:** PerfectViewSupport@teleco.com



Q: What can you do with our Centralized Management Software (CMS)?
A: The question should be, "What can't you do with it?"

SUPPORT UP TO 4 MONITORS AND 64 CAMERAS IN LIVE VIEW

- Up to 256 Encoded Devices
- Up to 64 Decoded Devices
- Up to 1024 Imported Cameras
- Up to 256 Camera Groups, with a Maximum of 256 Cameras in One Group
- Up to 16 Storage Servers, each Server's Recording Performance is 64x2Mbps
- Up to 16 Streams per Media Server, each Server has Incoming Connections of 64 Cameras and Outgoing Connections of 200 Cameras
- Up to 16 Camera Synchronized Playback
- Up to 16 Simultaneous Download Tasks
- Up to 50 Users



Our management software has no licensing fees and provides unparalleled control and administration of your clients entire surveillance system.

THE PERFECT WAY TO STAY SECURE.



MAC AND WINDOWS COMPATIBLE

CDS: 888.550.5700 | **SALES:** PerfectViewSales@teleco.com | **SUPPORT:** PerfectViewSupport@teleco.com

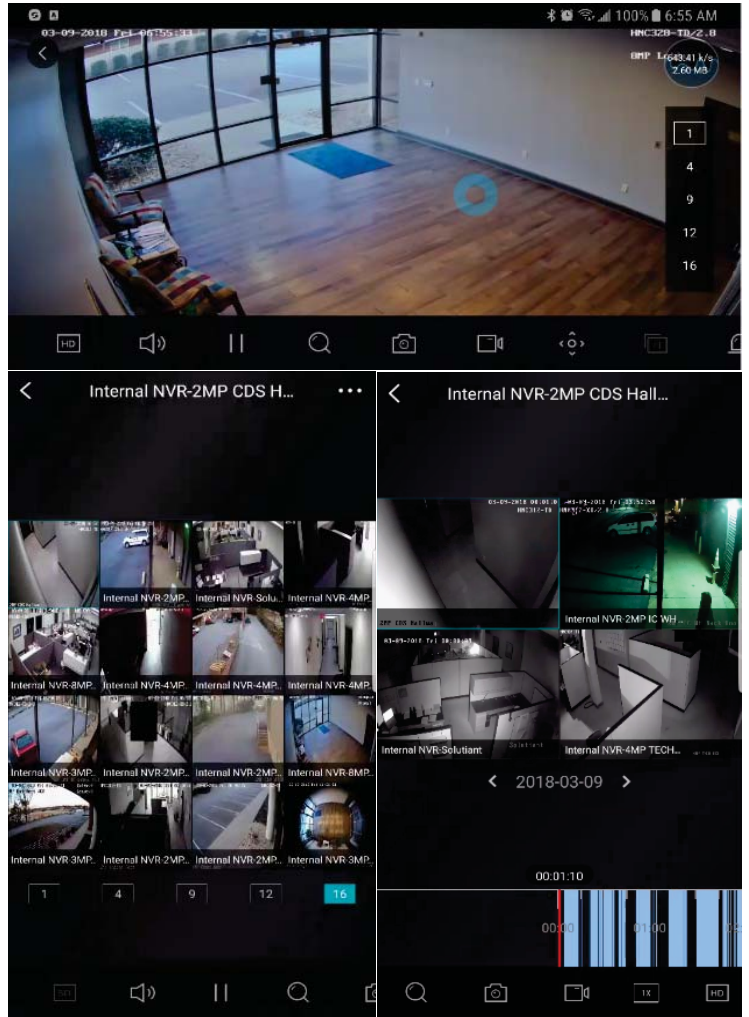




Q: Surveillance on the move?
A: Absolutely. Use Guarding Vision with your smartphone or tablet.

GUARDING VISION MOBILE APPLICATION

- Up to 256 Devices
- Up to 32 Cameras in One Live Session
- Remote Playback up to 4 Cameras
- Frame Rate up to 30fps (Device and Network Permitting)
- Resolution up to 1080p
- Stream includes Video and Audio
- Control Pan, Tilt and Zoom on PTZ Cameras
- Snapshot and Video Recording in Live View
- Clear, Balanced, Fluent and Customized Streams
- Simple, Intuitive Interface



Our mobile client seamlessly integrates with any Perfect View Recorder or IP camera from any networked location.



Guarding Vision available from your mobile app store.

CDS: 888.550.5700 | **SALES:** PerfectViewSales@teleco.com | **SUPPORT:** PerfectViewSupport@teleco.com



IP CAMERAS



COMMERCIAL-GRADE IP, TVI
AND ANALOG VIDEO
SURVEILLANCE SYSTEMS



PERFECTTM
VIEW

VIDEO SURVEILLANCE



TELECO.COM

430 WOODRUFF RD, SUITE 300, GREENVILLE, SC 29607

800.800.6159

TELECO[®]
COMBINING TECHNOLOGIES

