

PACC-LH250D

Double-door Magnetic Lock

The PACC-LH250D Double-door magnetic lock is designed for wooden door, glass door, and steel door with the opening angle of 90°. The maximum thrust of the lock is 600kg. It can be used for controlling door opening/closing, and the indicator shows the door status. It supports signal output of door lock output status testing.



AVAILABLE MODEL

PACC-LH250D

MAIN FEATURES

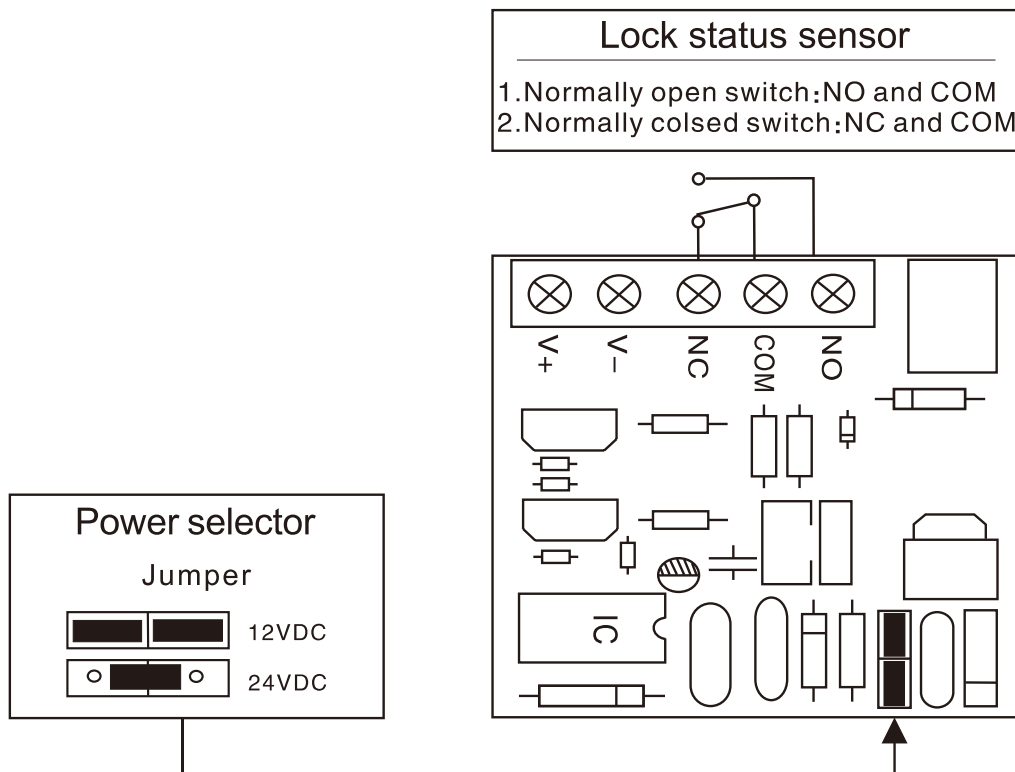
- The magnetic lock supports static linear thrust of 600kg;
- The power supply can be customized to be 12VDC or 24VDC, and the default voltage is 12VDC;
- It is equipped with internal voltage dependent resistor (MOV);
- It is applied to wooden door, glass door, metal door and fireproof door;
- LED indicator displays the status of door lock;
- Signal output of door lock status (NO\NC\COM)
- Anti-residual magnetism design
- Abrasion-proof materials;
- The shell is made up of aluminum and is hard anodizing electroplated;
- No mechanical failure, and the magnetic lock works by electromagnetism force;

SPECIFICATIONS

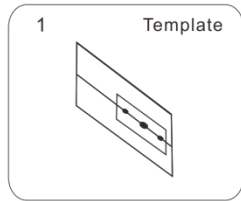
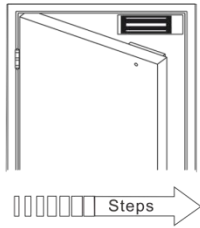
Model	PACC-LH250D
Dimension of Lock Body (L×W×H)	480×49×25.5mm (18.9×1.93×1.00")
Dimension of Armature Plate (L×W×H)	180×38×11mm (7.1×1.5×0.4")
Maximum Thrust	300kg×2 Linear Thrust
Input Voltage	12VDC /24VDC

Model	PACC-LH250D
Working Current	12V/500mA×2 24V/250mA×2
Signal Output	Dry Contact Signal Output, Support Maximum Power Rate of 3A, NO Output While Locking and NC Output While Unlocking
LED Indicator	Red (Door is Unlocked) Green (Door is Locked)
Suitable Door	Wooden Door, Glass Door, Metal Door, Fireproof Door
Working Temperature	-10°C to +55°C (14°F to 131°F)
Working Humidity	0 to 95% (Relative Humidity)
Shell	Hard Anodizing Electroplating Operated
Lock Body	Eco-friendly Zinc Electroplating Operated
Armature Plate	Eco-friendly Zinc Electroplating Operated
Weight	4.2kg(9.3lb)

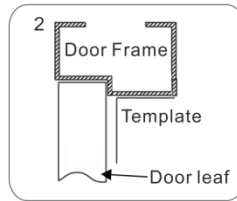
Circuit Board Diagram



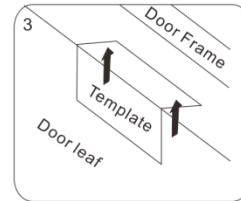
Installation



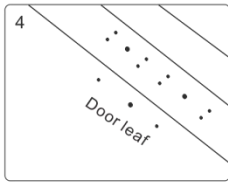
1 Template
Fold the plate to 90°.



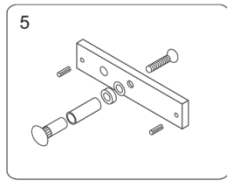
2 Door Frame Template Door leaf
Close the door first, then place the upper side of template on door frame, while adjust the left side next to the door leaf.



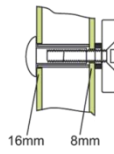
3 Door Frame Door leaf Template
Mark screw positions of armature plate and magnetic lock on door leaf and door frame respectively.



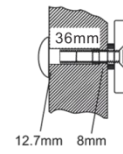
4 Door leaf
Drill holes based on the marked positions.



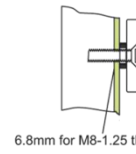
5
Make a combination based on the picture.



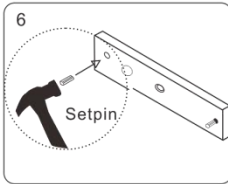
Hollow Metal Door
Drill a hole
Inside: Diameter is 8mm
Outside: Diameter is 16mm



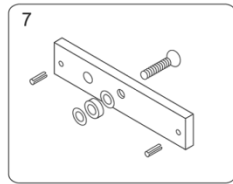
Wooden Door
Drill a hole
Inside: Diameter is 8mm
Outside: Diameter is 12.7mm



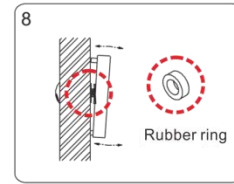
Metal Surface Door
Inside: Drill a hole diameter is 8mm folding the plastic straight pin



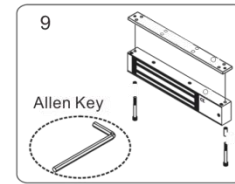
6 Setpin
Strike the pin into the armature plate slightly (to avoid movement).



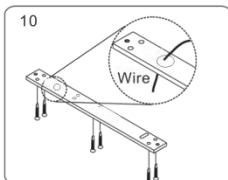
7
Make a combination based on the picture (add washer accordingly). The rubber ring must be added.



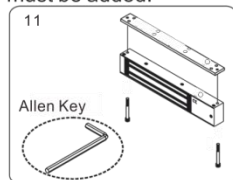
8 Rubber ring
Place the rubber ring between armature plate and door leaf.



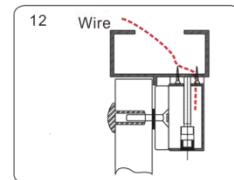
9 Allen Key
Use Allen key to remove the mounting plate from lock body.



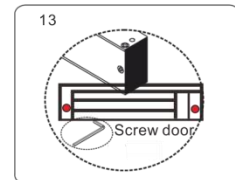
10 Wire
Fix the mounting plate on the door frame according to the holes drilled earlier.



11 Allen Key
Use Allen key to screw the lock body on the mounting plate.



12 Wire
Close the door to test holding force. The angle between armature plate and magnetic lock can be adjusted by adding or reducing washers.



13 Screw door
After all the appropriate procedures, the holding force can be maximized. Finally, fix the tamper screw.

Installation Instruction

