

## Web-managed PoE Switch

### Introduction

The PPE series PoE switch supports 8 100M PoE electrical ports and can be powered by the network cable directly. 802.3af (15.4W) and 802.3at (30W) standards can be self-adaptive. The PoE maximum output power is 120. The switch can transmit power and data for the powered devices such as AP, IPcamera, VoIP (Voice over Internet Protocol), etc. simultaneously via normal CAT5 twisted pair.

The switch supports network EXTEND mode. If the EXTEND mode is enabled, the maximum data transmission and power supply distance of the corresponding port can be extended to 250 meters via CAT5e twisted pair or above. The 8-core power supply technology helps to reduce the power circuit loss effectively. The data monitor and control for the important ports can guarantee the data or video transmission of key area first. The web managed switch supports intelligent management such as VLAN, link aggregation, QoS, loop guard via STP, SNMP, etc. to reduce the project construction difficulty and time, save the project cost at the greatest extent and protect customer's investment.

The all-metal design of the complete machine guarantees the firm structure, convenient usage and good reliability. The switch can be used in surveillance scenes such as parks, public security, buildings, etc..

### Features and Functions

- 802.3af/at PoE standard;
- 8-core power supply technology, reducing the power circuit loss;
- Data monitor and control for the important ports;
- EXTEND mode available to extend the network cable transmission distance to 250 meters;
- Buffer optimization to guarantee the video data transmission;
- VLAN configurable;
- Port trunk;
- STP, multicast and port mirroring;

- QoS;
- SNMP
- WEB management;
- Store-and-forward switching;
- IEEE802.3, IEEE802.3u and IEEE802.3x network standards available;
- MTBF (Mean Time Between Failure)  $\geq$  100,000 hours;
- All-metal enclosed construction;
- Table-mounted and rack-mounted design for convenient installation.

### Available Models

Model	Description
PPE-1310P-E	Web-managed PoE switch with 8 100M PoE electrical ports and 2 1000M COMBO ports

# Panel

PPE-1310P-E



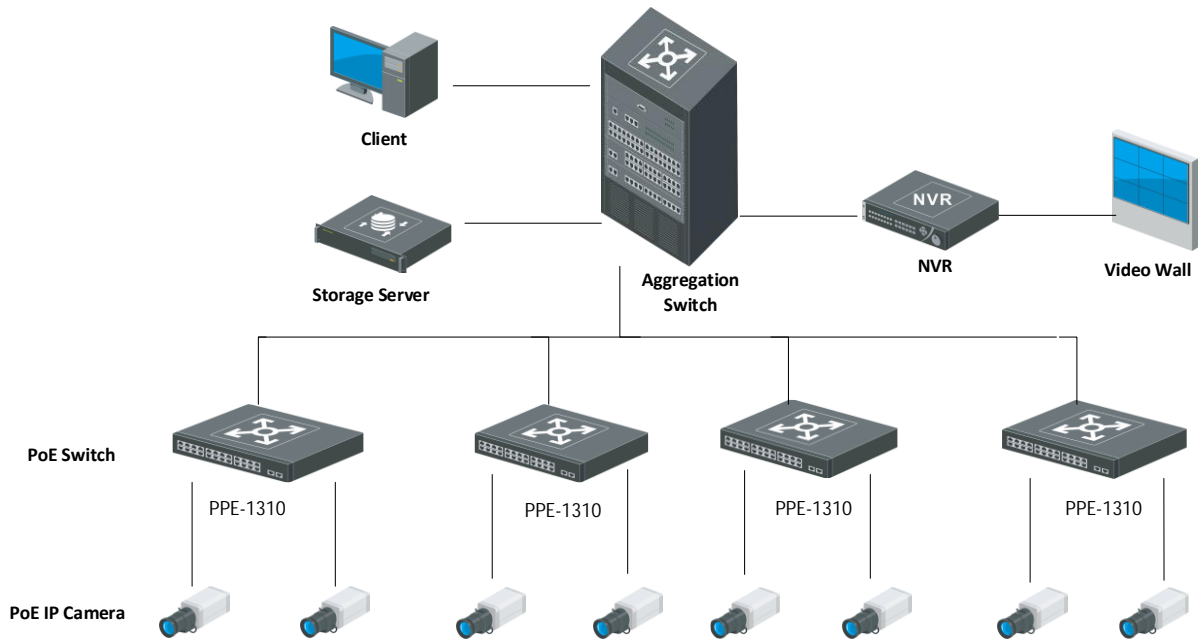
## Hardware Specifications for Web-managed Models

Model		DS-3E1310P-E		
Port	10/100M RJ45	8		
	10/100/1000M RJ45	2		
	1000M SFP	2 (multiplex)		
	Port of high priority	Port 1 to 8		
Performance	Store-and-forward	Support		
	MAC address table	4K		
	MAC address learning	Automatic learning/Aging		
	Backplane bandwidth	5.4 Gbps		
PoE	PoE standard	IEEE 802.3af, IEEE802.3at		
	PoE cable core	Supports 8-core power supply and simultaneous power supply via the 1236 and 4578 line order.		
	PoE port	Port 1 to 8		
	Port max. power	30W		
	Switch max. power	123W		
Power Consumption		≤150W		
Lighting Protection Grade	For port	4 KV		
	For power supply	6 KV		
Power Supply		100 to 240 VAC, 50/60Hz		
Operating Environment	Working environment	Temperature: 0 °C to +40 °C (+32 °F to +104 °F) Humidity: 10% to 90% (Relative humidity, without condensation)		
	Storage environment	Temperature: -40 °C to +70 °C (-40 °F to +158 °F) Humidity: 5% to 90% (Relative humidity, without condensation)		
Data Transfer Rate		Ethernet: 10 Mbps (half-duplex)/20 Mbps (full-duplex) Fast Ethernet: 100 Mbps (half-duplex)/200 Mbps (full-duplex) Gigabit Ethernet: 2000 Mbps (full-duplex)		
Network Media		Ethernet: UTP/STP of CAT3 or above Fast Ethernet: UTP/STP of CAT5 or above Gigabit Ethernet: Recommended UTP/STP of CAT5e or CAT6 1000 Base-SX: MMF (Multi-Mode Fiber) 1000 Base-LX: MMF (Multi-Mode Fiber) or SMF (Single Mode Fiber)		
Network Standard		IEEE 802.3, IEEE 802.3u, IEEE802.3ab, IEEE 802.3af, IEEE802.3at, IEEE 802.3x, IEEE802.3z		

## Software Specifications for Web-managed Models

Item	Specifications
Port	When the EXTEND mode is enabled, the maximum data transmission (for 10 Mbps full/half duplex communication only) and power supply distance can be extended to 250 meters via CAT5e twisted pair or above.
PoE	IEEE 802.3at/IEEE 802.3af Enable/Disable PoE PoE over-temperature protection Display power supply status and output power of the PoE port Dynamic power supply of the PoE port. Power supply priority (Port 1 > Port 2 > ... > Port 16... > Port 24)
Security Feature	MAC address binding
VLAN	One-key enable VLAN Port VLAN (Max. 18/26 groups can be configured) IEEE 802.1Q VLAN (Max. 31 groups can be configured)
Port Trunk	3 groups: Port 1, 2, 3 and 4 Port 5, 6, 7 and 8 Port G1/G1-F and G2/G2-F
STP (Spanning Tree)	IEEE 802.1d Spanning Tree Protocol IEEE 802.1w RSTP (Rapid Spanning Tree Protocol)
Multicast	IGMP Snooping and IGMP v1/v2
Mirroring	N: 1 port mirroring
QoS	FIFO (First-in First-out) SP (Strict Priority) WP (Weighted Priority)
MAC Address Management	MAC address aging and static MAC address configuration
Loading and Upgrade	HTTP upgrade Import/Export configuration file
Management and Maintenance	SNMP v1/v2 WEB management

# Networking Application



Distributed by



## Headquarters

No.555 Qianmo Road, Binjiang District,  
Hangzhou 310051, China  
T +86-571-8807-5998  
overseasbusiness@hikvision.com

**Hikvision USA**  
T +1-909-895-0400  
sales.usa@hikvision.com

**Hikvision Italy**  
T +39-0438-6902  
info.it@hikvision.com

**Hikvision Singapore**  
T +65-6684-4718  
sg@hikvision.com

**Hikvision Europe**  
T +31-23-5542770  
saleseuro@hikvision.com

**Hikvision France**  
T +33(0)1-85-330-444  
info.fr@hikvision.com

**Hikvision Oceania**  
T +61-2-8599-4233  
salesau@hikvision.com

**Hikvision Middle East**  
T +971-4-8816086  
salesme@hikvision.com

**Hikvision Spain**  
T +34-91-737-16-55  
info.es@hikvision.com

**Hikvision Hong Kong**  
T +852-2151-1761

**Hikvision Russia**  
T +7-495-669-67-99  
saleru@hikvision.com

**Hikvision Poland**  
T +48-22-460-01-50  
poland@hikvision.com

**Hikvision Canada**  
T +1-909-895-0400  
sales.usa@hikvision.com

**Hikvision India**  
T +91-22-28469900  
sales@pramahikvision.com

**Hikvision UK**  
T +44-1628-9021-4  
support.uk@hikvision.com