

Title:	How to add NVR to Control4	Version:	v1.0	Date:	021517
Product:	Netra NVR	Page:	1 of 7		
Action Required:	Information Only				

Supported List

Netra NVR: 76/77/86/9600NI-ST-RT-XT-SP **Firmware:** V3.4.31 Build 161206 (Customized Firmware)

Control4 Driver: nvr-hikvision.c4z

(Location: USA FTP (ftp.hikvisionusa.com) >> 3rd Party Partners >> Partners >> Control4 >> Control4 driver >> Netra NVR driver)

Testing Environment

NVR: DS-7716NI-SP/16 **Firmware:** V3.4.31 build 161206 (Customized Firmware)

Control4 Composer Version: V2.9.1

Add Driver to Composer

1. Open Composer V2.9.1.
2. Choose "Local System".
3. Choose director, and then click "Connect". Then main window shows up.
4. Click the "Driver" in the menu.
5. Choose "Add or Update Driver", and then choose the control4 driver for NVR. Click "Open".



Figure 1. Local System

Title:	How to add NVR to Control4	Version:	v1.0	Date:	021517
Product:	Netra NVR	Page:	2 of 7		
Action Required:	Information Only				

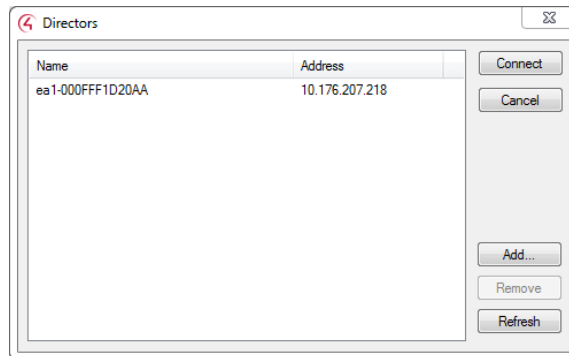


Figure 2. Directors

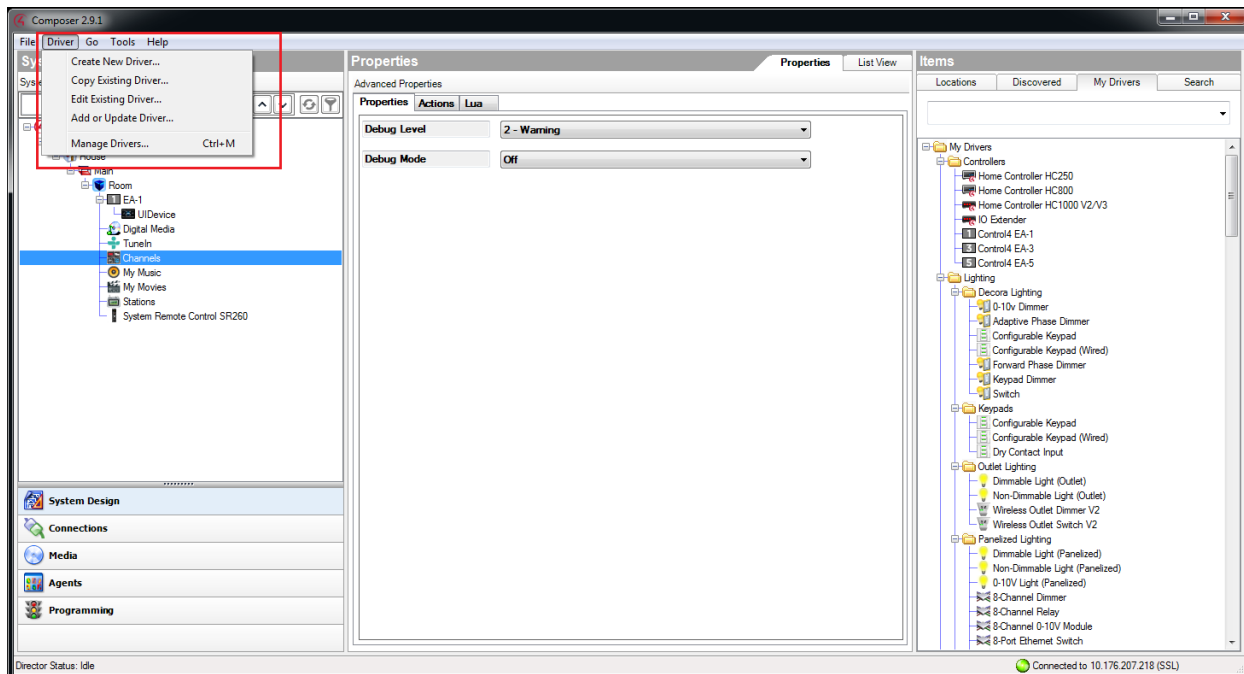


Figure 3. Add Driver

Title:	How to add NVR to Control4	Version:	v1.0	Date:	021517
Product:	Netra NVR	Page:	3 of 7		
Action Required:	Information Only				

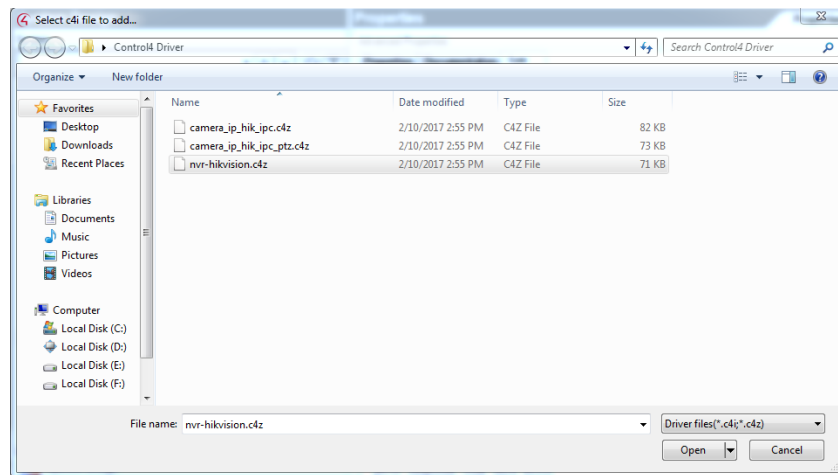


Figure 4. Choose Driver

Add NVR to Composer

1. Set the HIKVision NVR/DVR to a static IP address
2. Go to Menu>Configuration>Network
3. Uncheck the “Enable DHCP”, and type your static IP address entered.
4. Click “Apply”.

Add the NVR automatically:

1. In the composer, click the “System Design”. In the Items Panel, choose the “Discovered” Tab.
2. If you can find the camera in the discovered list. Please double-click the device.
3. The composer will automatically add the device into your project tree.

Title:	How to add NVR to Control4	Version:	v1.0	Date:	021517
Product:	Netra NVR	Page:	4 of 7		
Action Required:	Information Only				

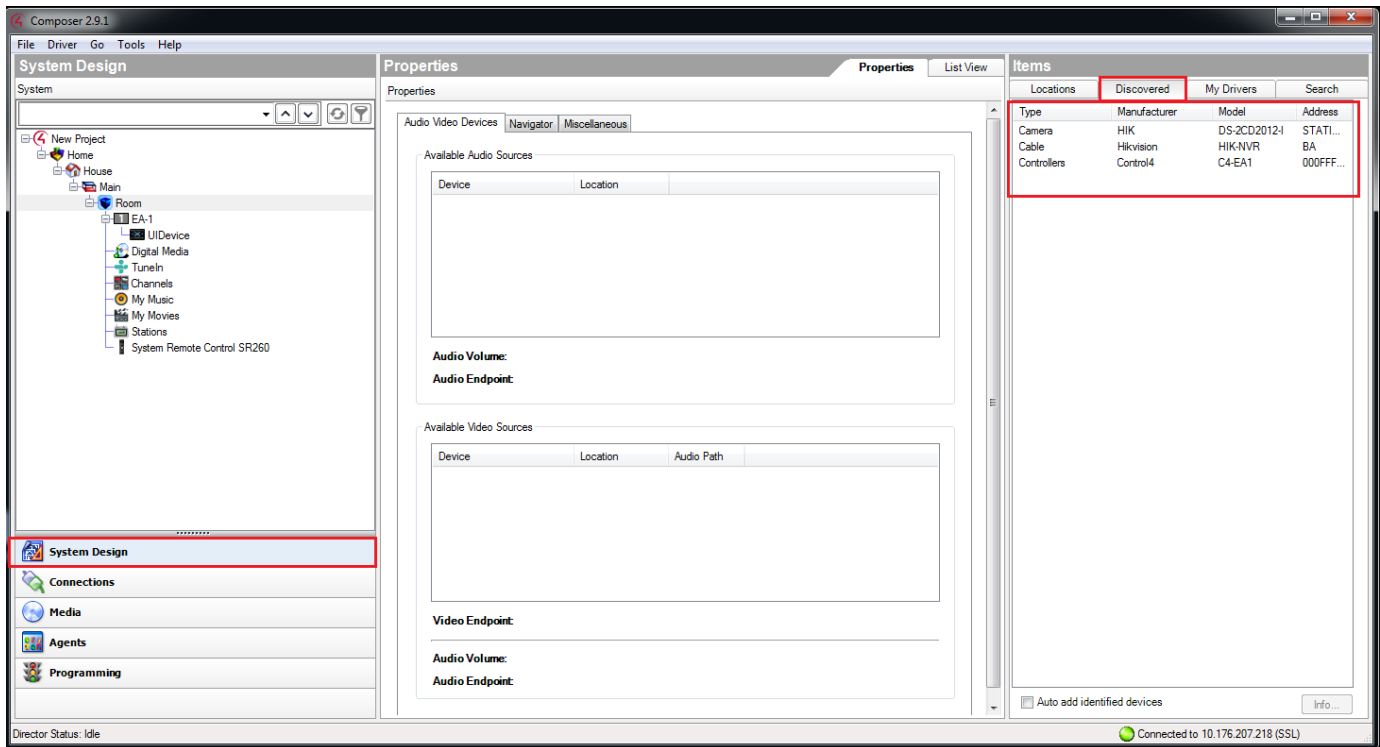


Figure 5. Discovered List

Add the NVR Manually:

1. Go the "System Design" in Composer.
2. In the "Items" Panel, click "Search" tab.
3. Type "Hikvision" in the search input box
4. Double-click "NVR/DVR IP". Composer will add the driver to your project.
5. Go the "Connection" in Composer.
6. Go to Network >> IP Network.
7. Identify the driver by dragging and dropping the available device.
8. Then you can see the address in the "IP Network Connection".
9. Or you can click the "Identify" button. Then enter the IP address for IP camera. Click "Close" button.

Title:	How to add NVR to Control4	Version:	v1.0	Date:	021517
Product:	Netra NVR	Page:	5 of 7		
Action Required:	Information Only				

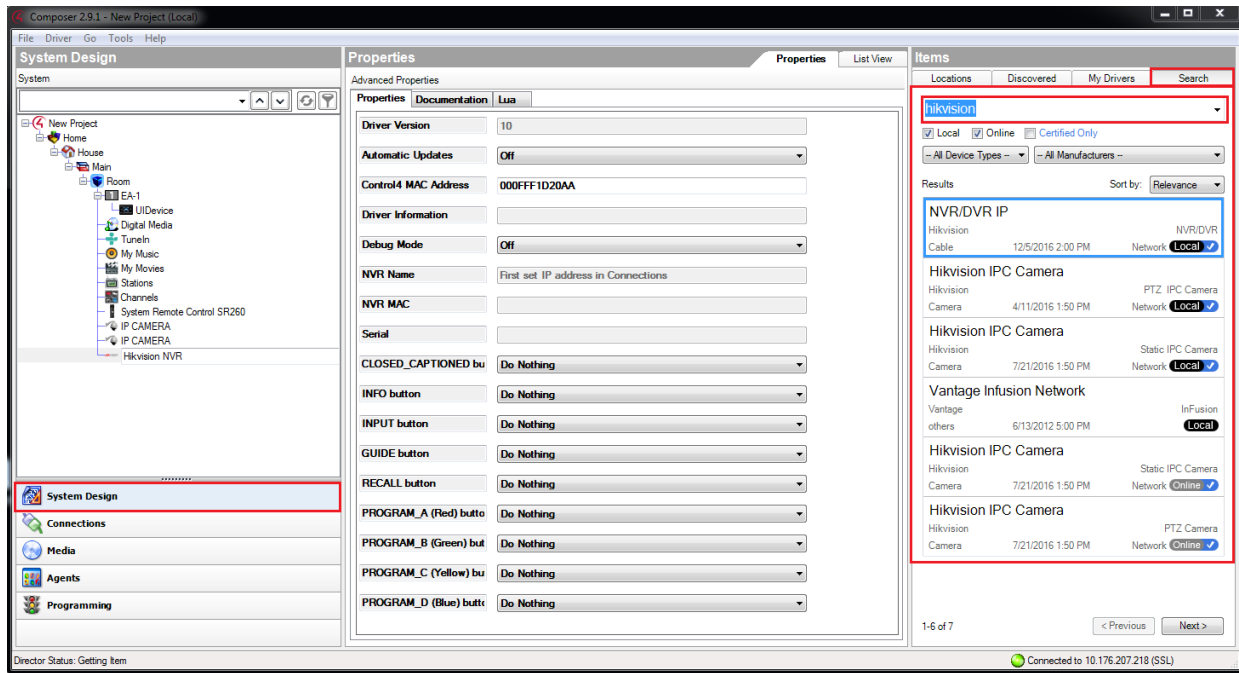


Figure 6. Search Driver

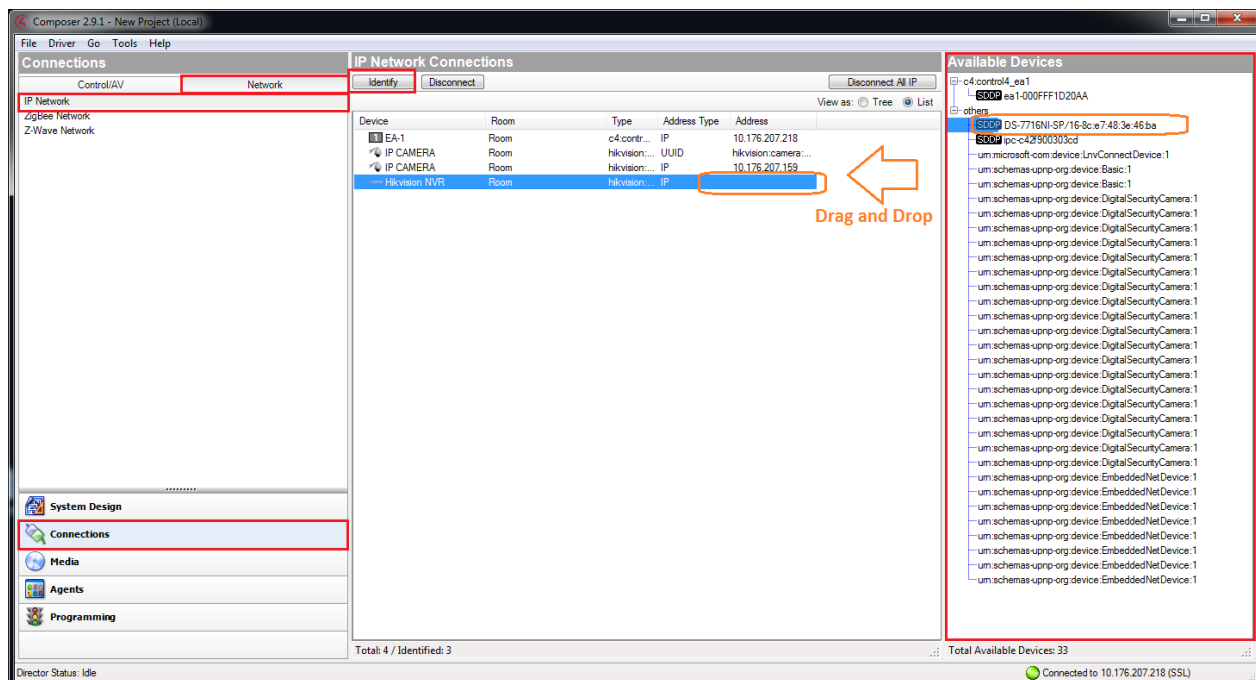


Figure 7. Add Available Device

Title:	How to add NVR to Control4	Version:	v1.0	Date:	021517
Product:	Netra NVR			Page:	6 of 7
Action Required:	Information Only				

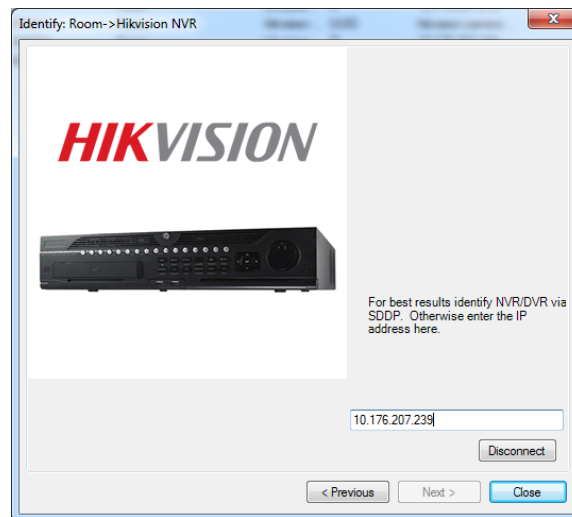


Figure 8. Type the IP address

Remote Control for NVR

1. Go to Control4 Composer. Double click the IP camera in the project tree. The Hikvision NVR window shows up.
2.
 - The # key is mapped to the 'Preview' function.
 - The * key is mapped to the 'PTZ' function.
 - The DVR key will bring up the Search.
 - The Skip Back and Forward buttons are used as Step Back and Step Forward in playback.
 - When a single camera is displayed full screen Ch+ Ch- will cycle through cameras
 - When using a PTZ camera the navigation arrows can be used to move the camera and Page Up/Page Down to zoom in and out.

Title:	How to add NVR to Control4	Version:	v1.0	Date:	021517
Product:	Netra NVR	Page:	7 of 7		
Action Required:	Information Only				



Figure 9. NVR Control